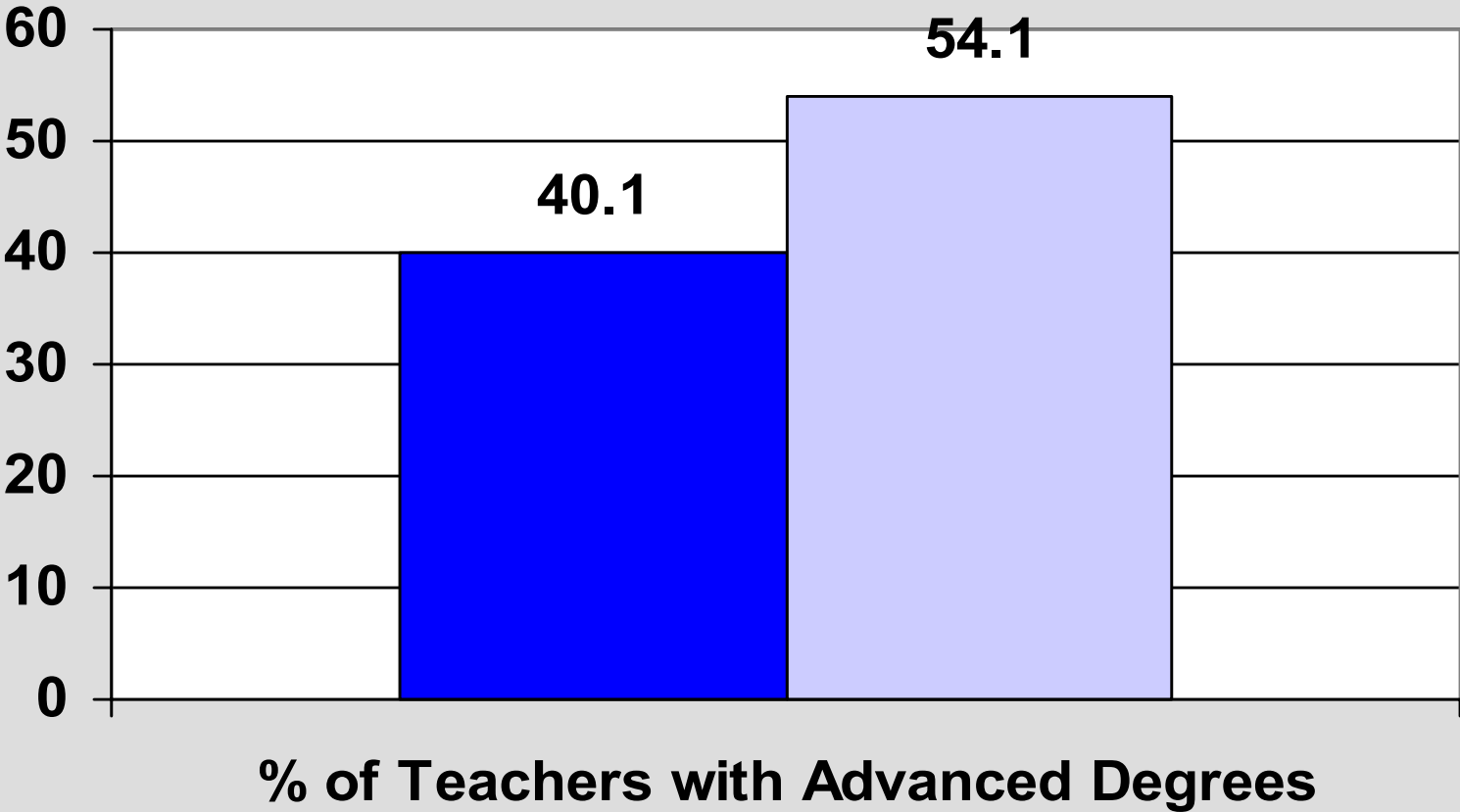


Dr. Linda Darling-Hammond

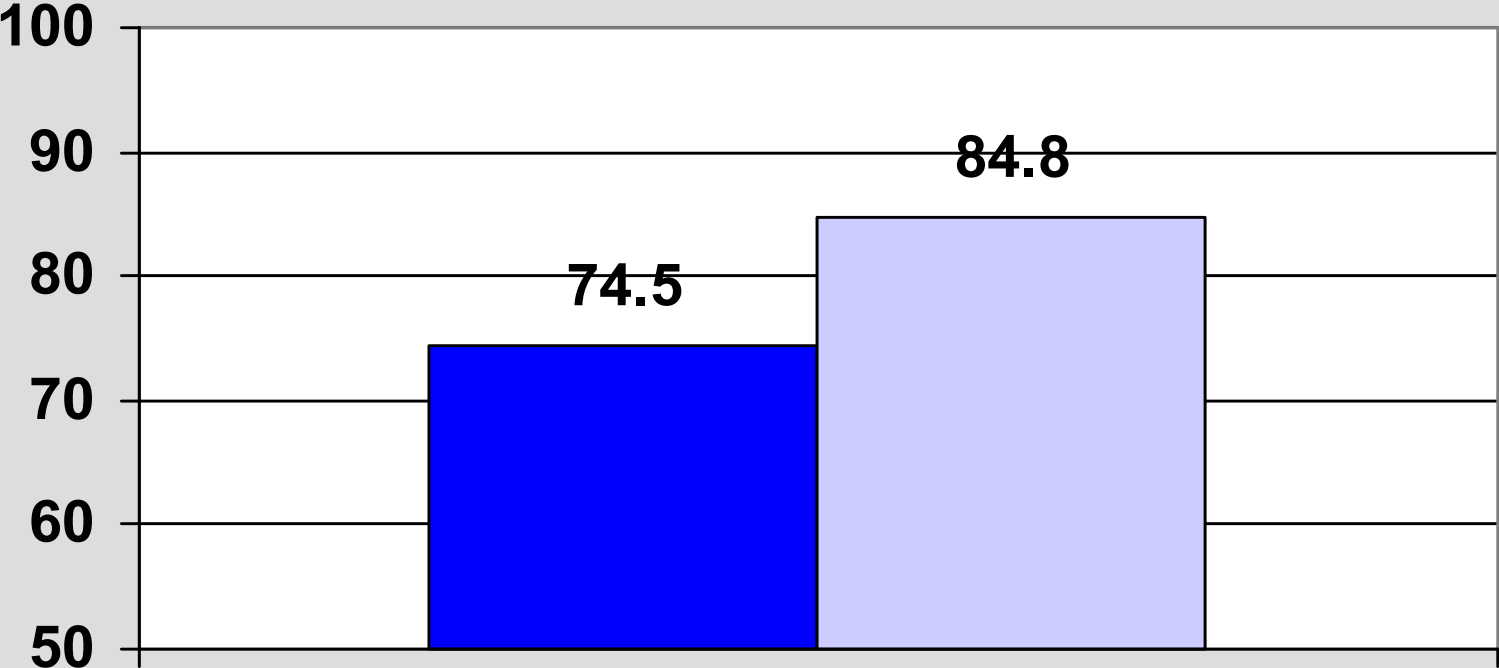
Differences in Teacher Qualifications across Districts, By Poverty Levels of Students

■ High Poverty ■ Low Poverty



Differences in Teacher Qualifications across Districts, By Poverty Levels of Students

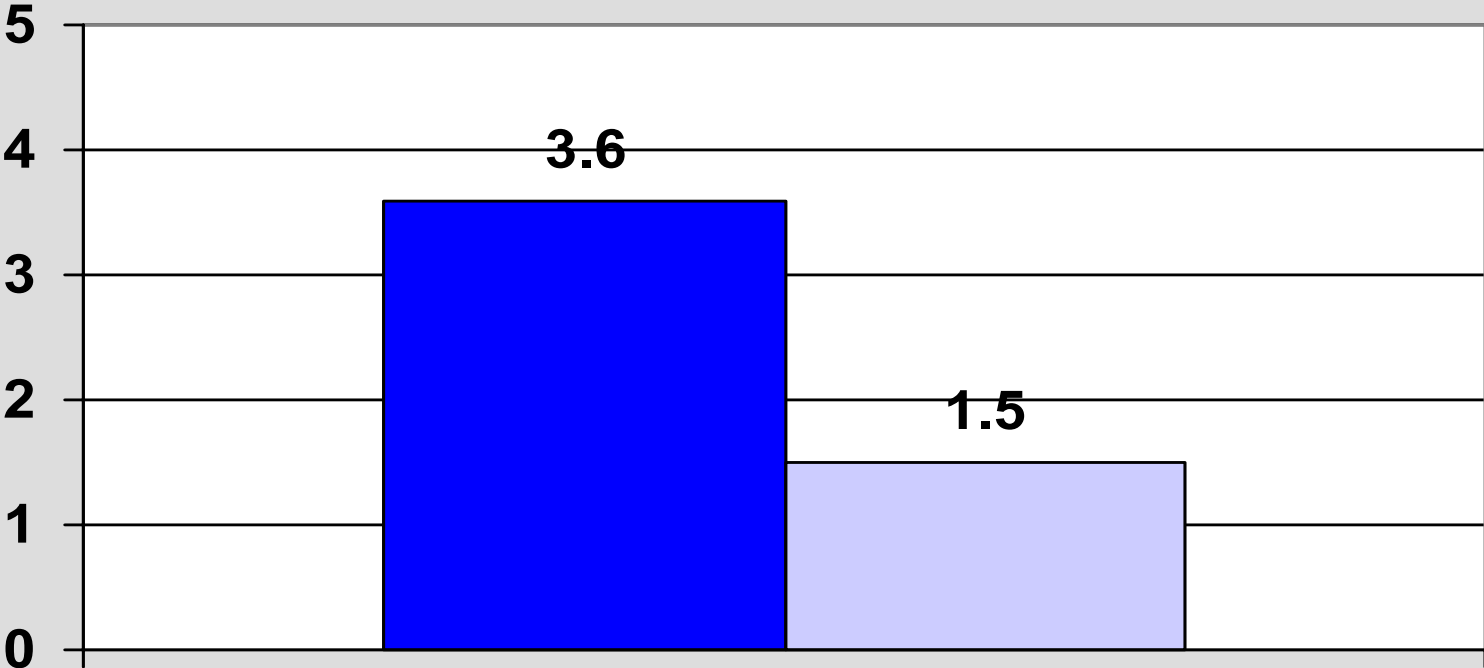
■ High Poverty ■ Low Poverty



% of Teachers on Continuing Contracts

Differences in Teacher Qualifications across Districts, By Poverty Levels of Students

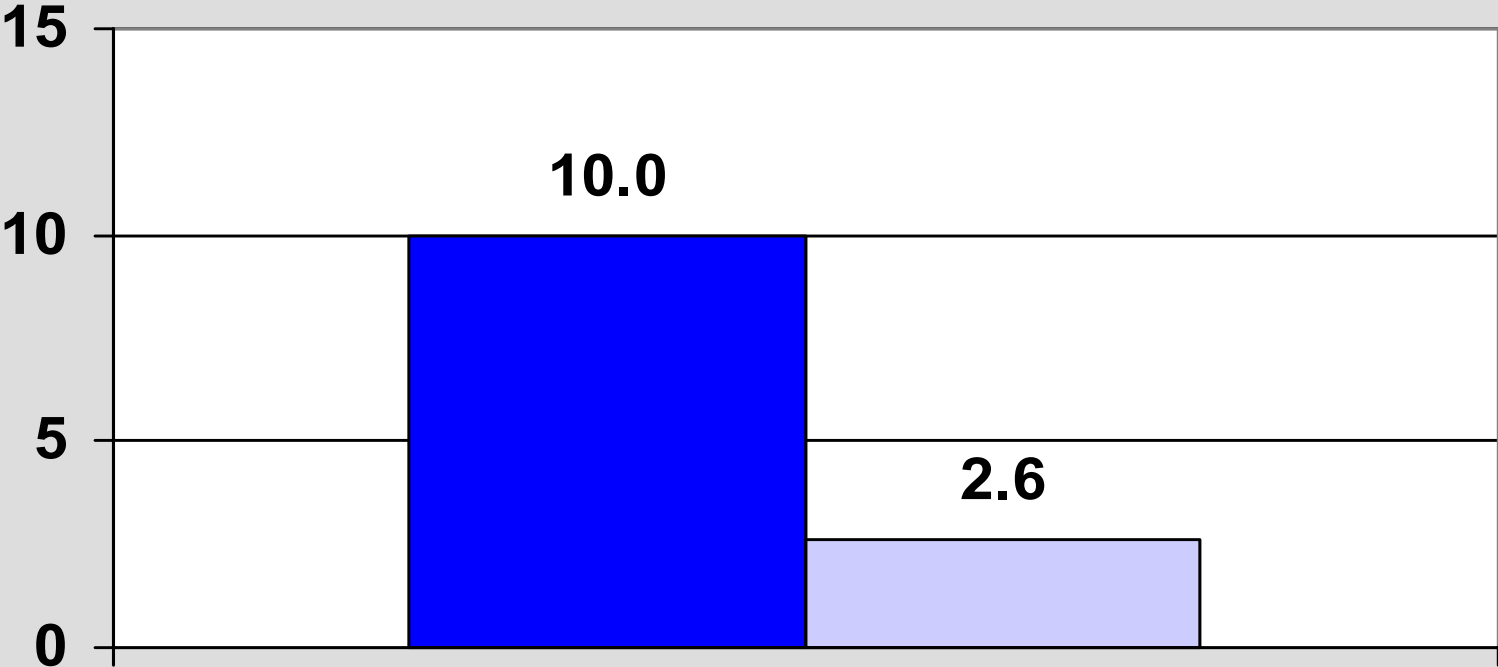
■ High Poverty ■ Low Poverty



% of Teachers with Out-of-Field Permits

Differences in Teacher Qualifications across Districts, By Poverty Levels of Students

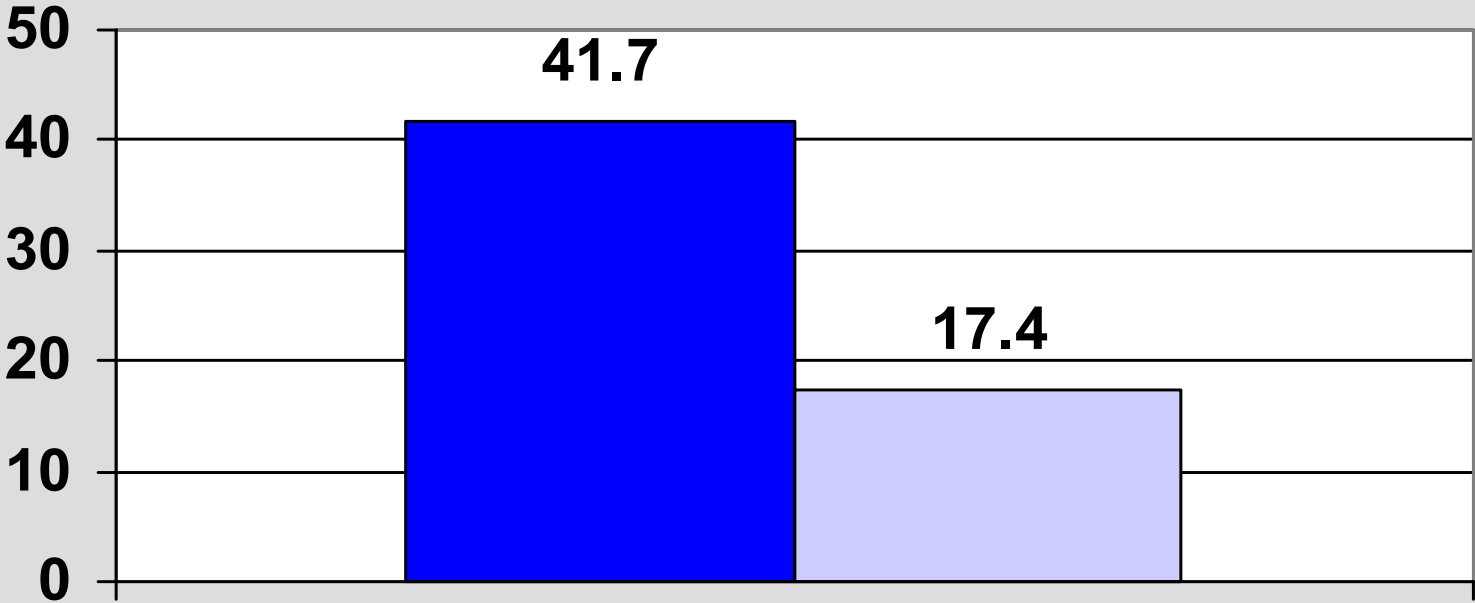
■ High Poverty ■ Low Poverty



% of Teachers with Substandard Certificates

Differences in Teacher Qualifications across Districts, By Poverty Levels of Students

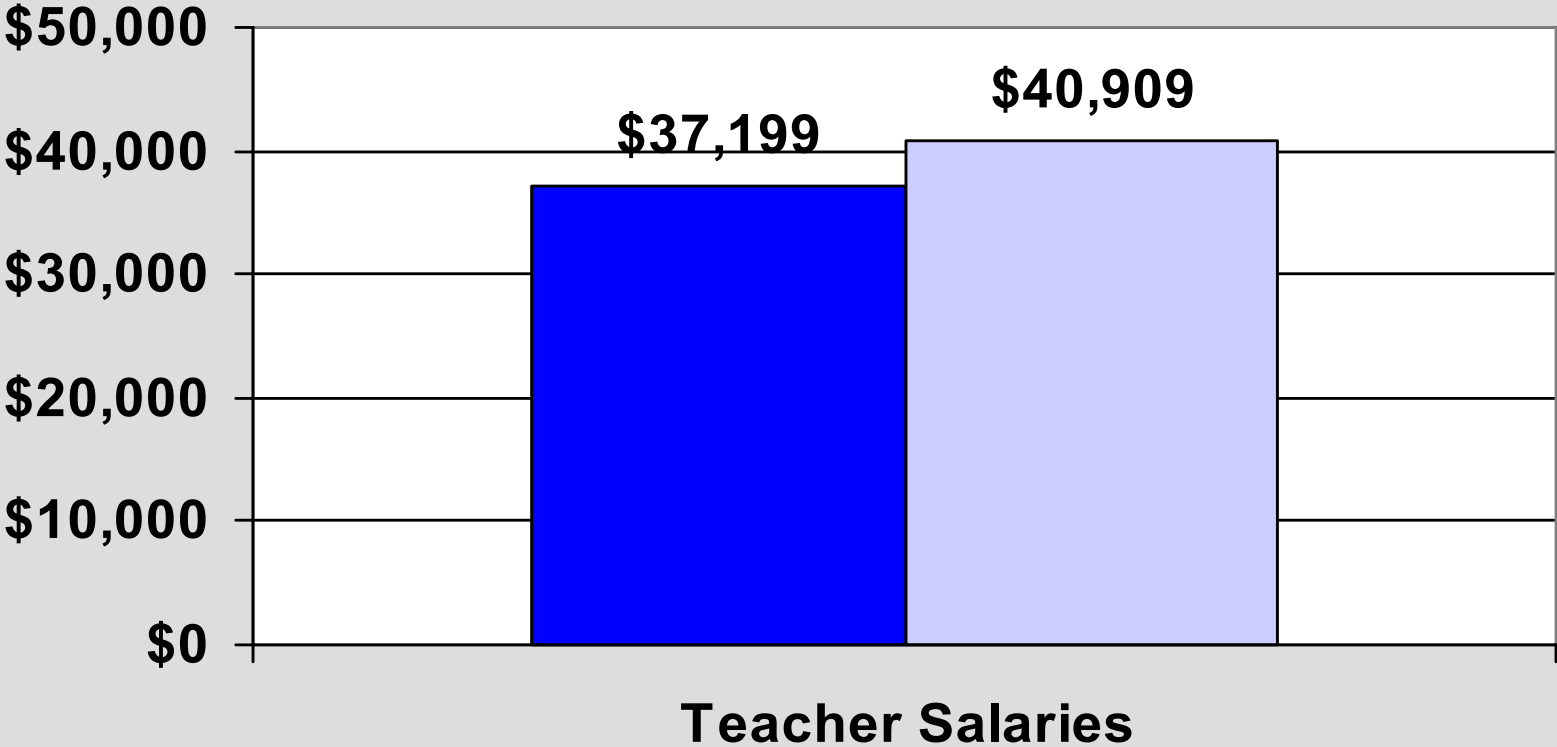
High Poverty **Low Poverty**



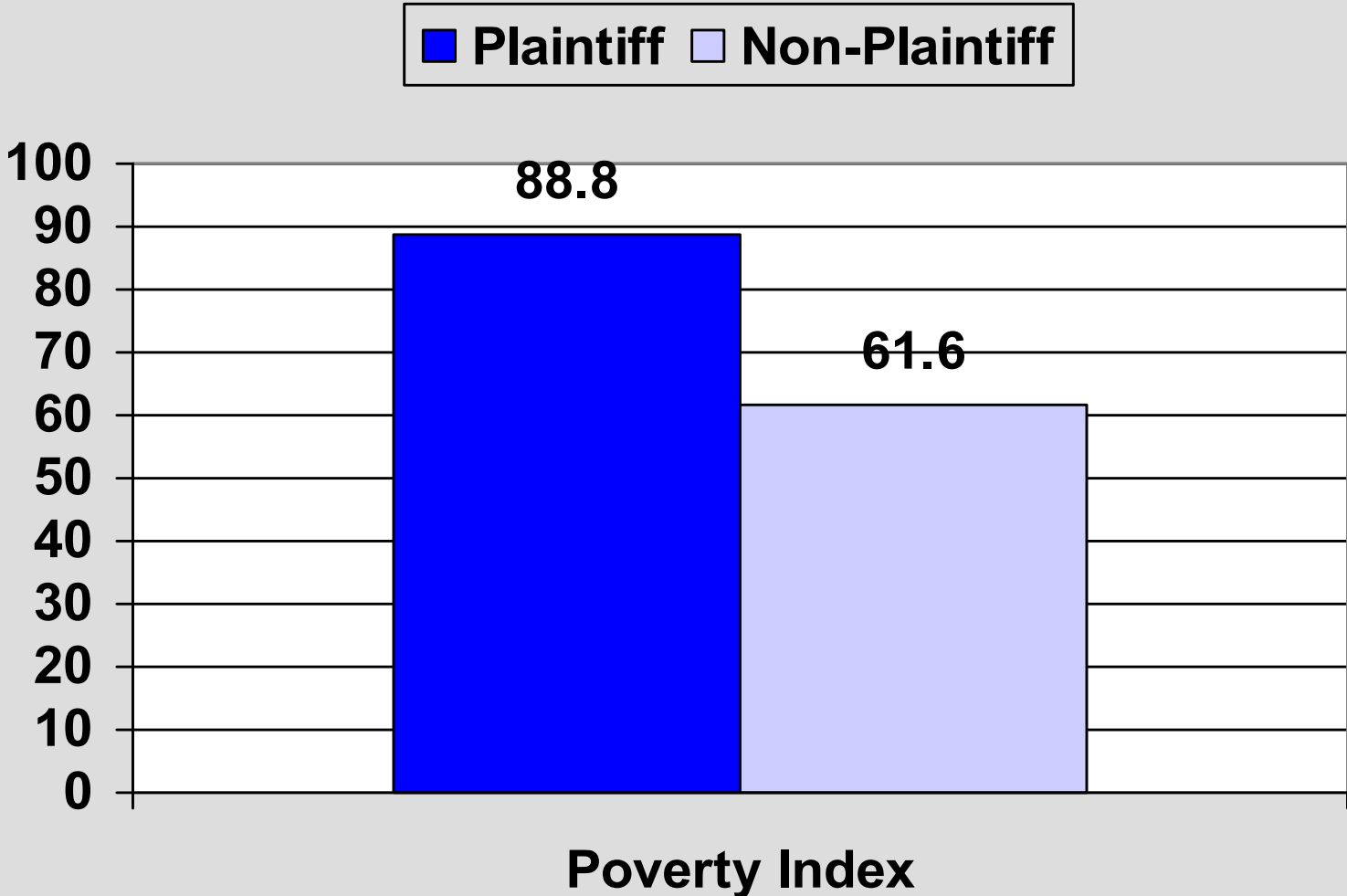
% of Teachers with BA from Noncompetitive College

Differences in Teacher Qualifications across Districts, By Poverty Levels of Students

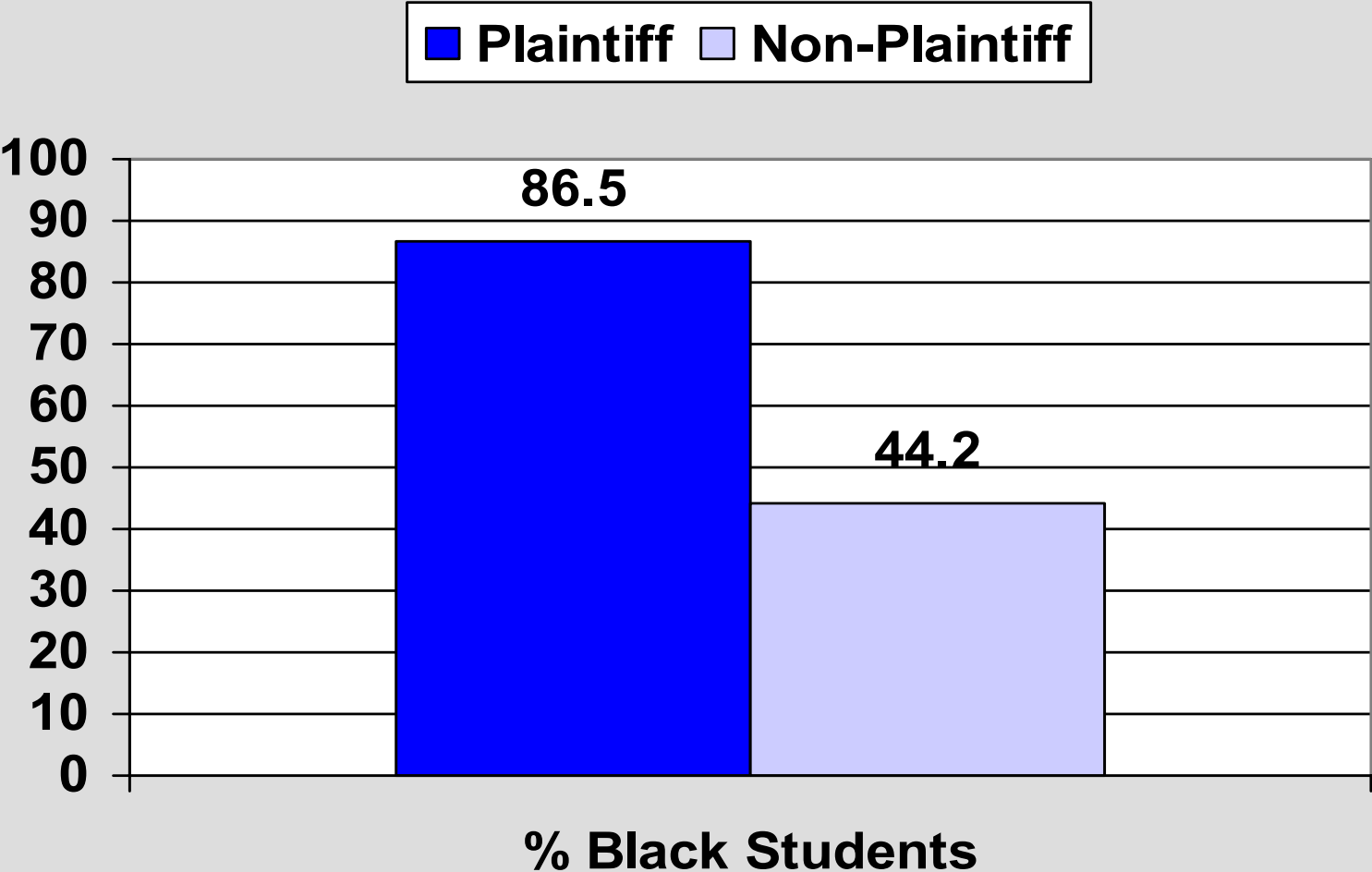
■ High Poverty ■ Low Poverty



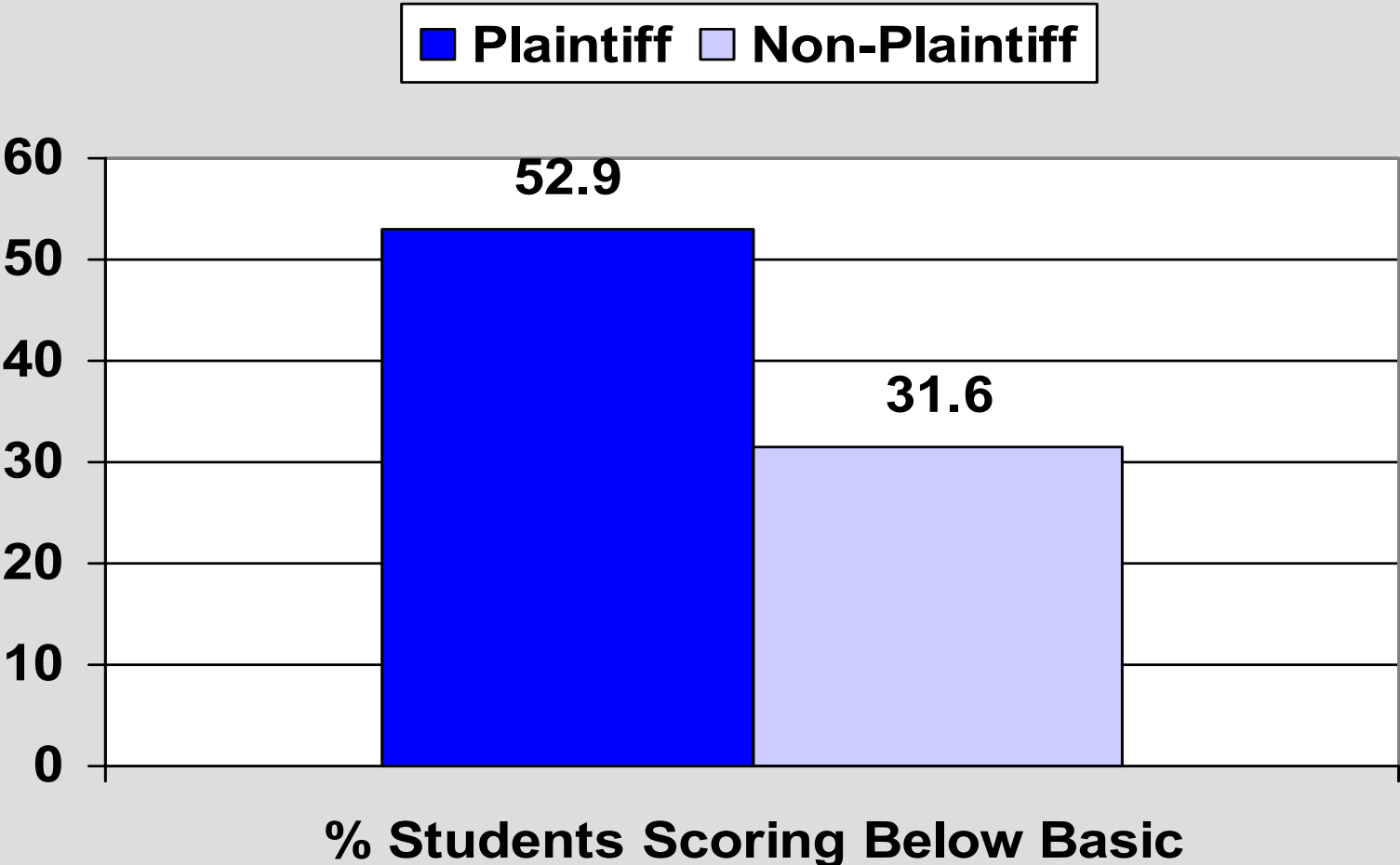
Student Characteristics and Teacher Qualifications For Plaintiff & Non-Plaintiff Districts



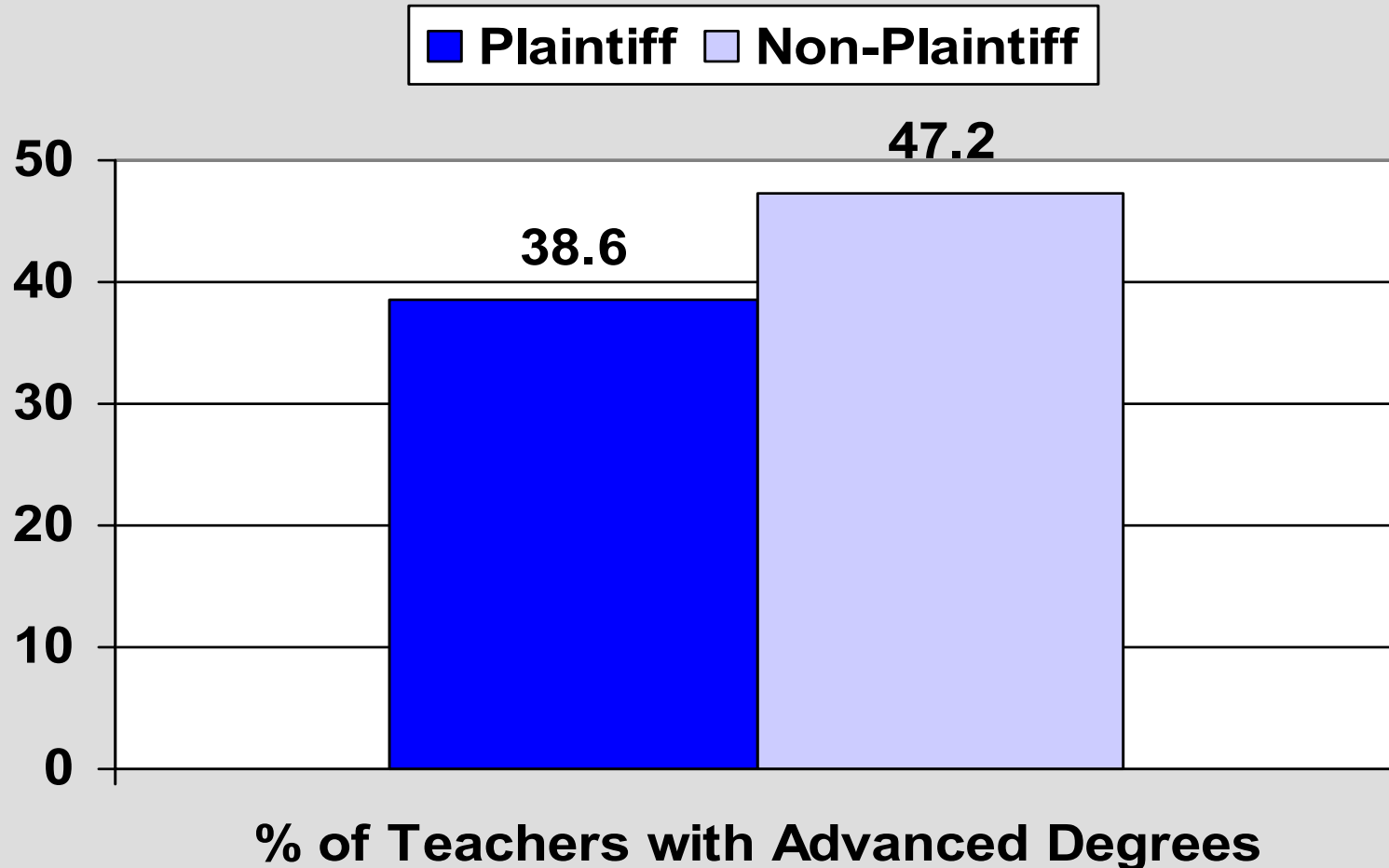
Student Characteristics and Teacher Qualifications For Plaintiff & Non-Plaintiff Districts



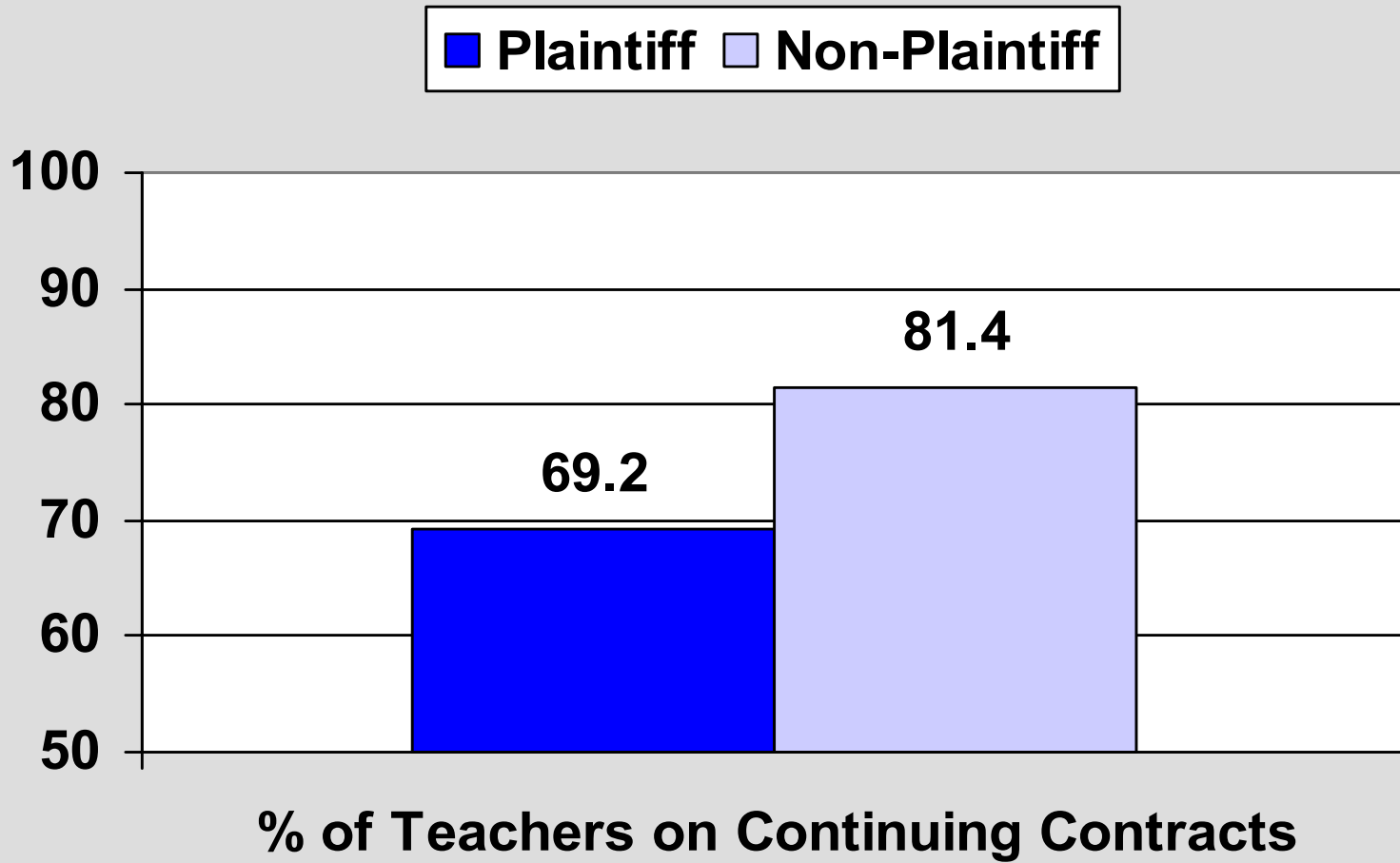
Student Characteristics and Teacher Qualifications For Plaintiff & Non-Plaintiff Districts



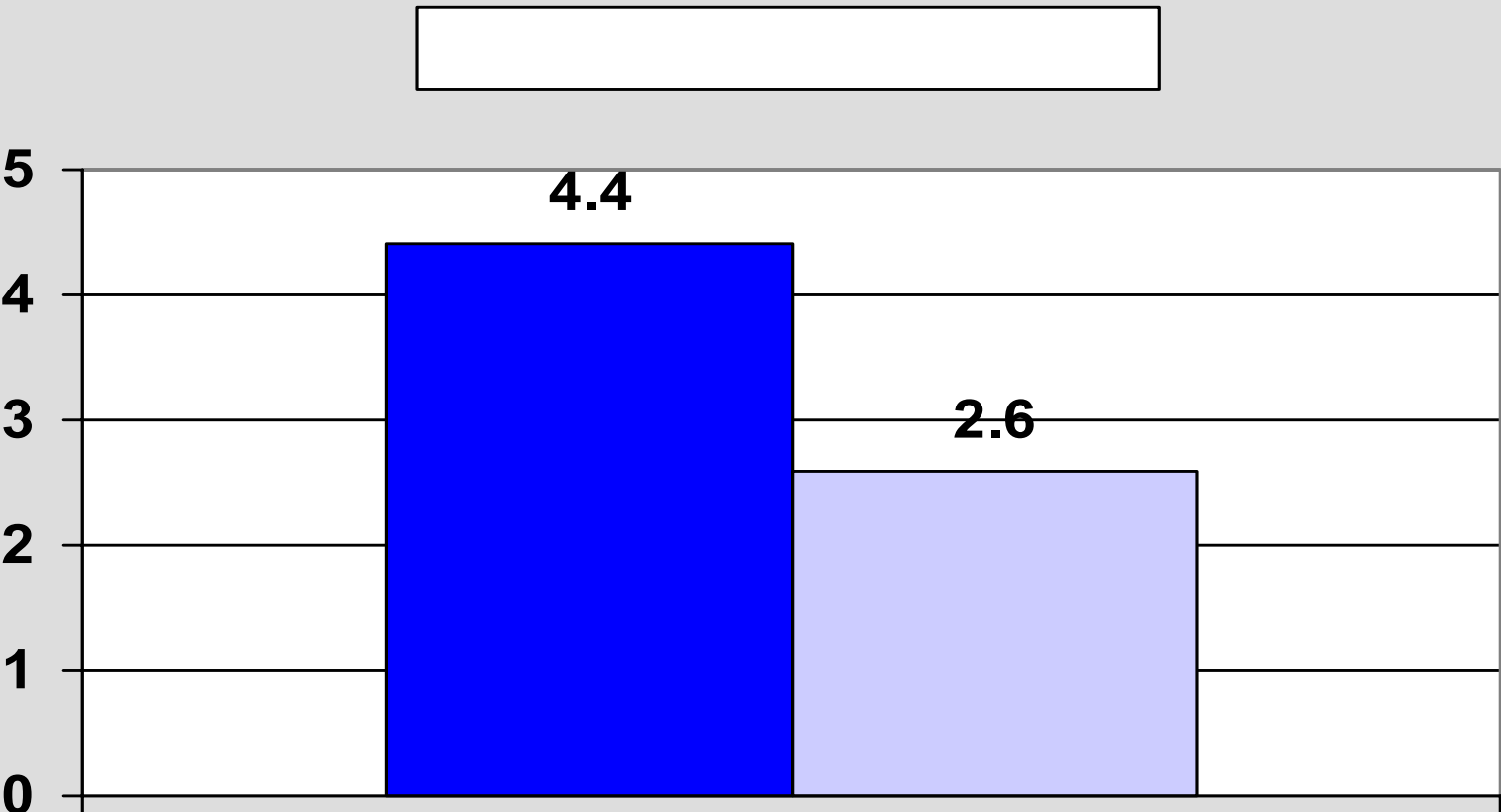
Student Characteristics and Teacher Qualifications For Plaintiff & Non-Plaintiff Districts



Student Characteristics and Teacher Qualifications For Plaintiff & Non-Plaintiff Districts

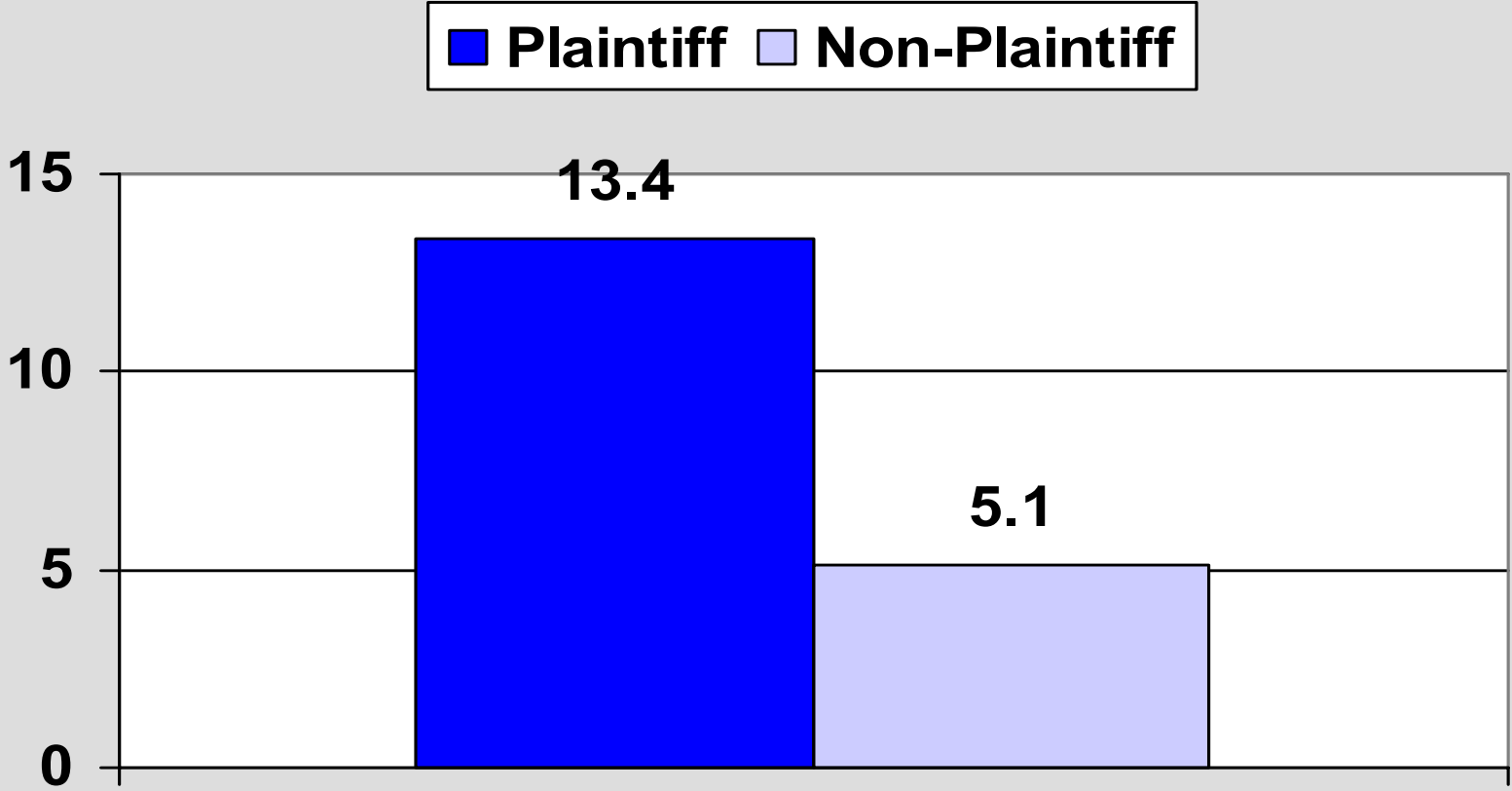


Student Characteristics and Teacher Qualifications For Plaintiff & Non-Plaintiff Districts



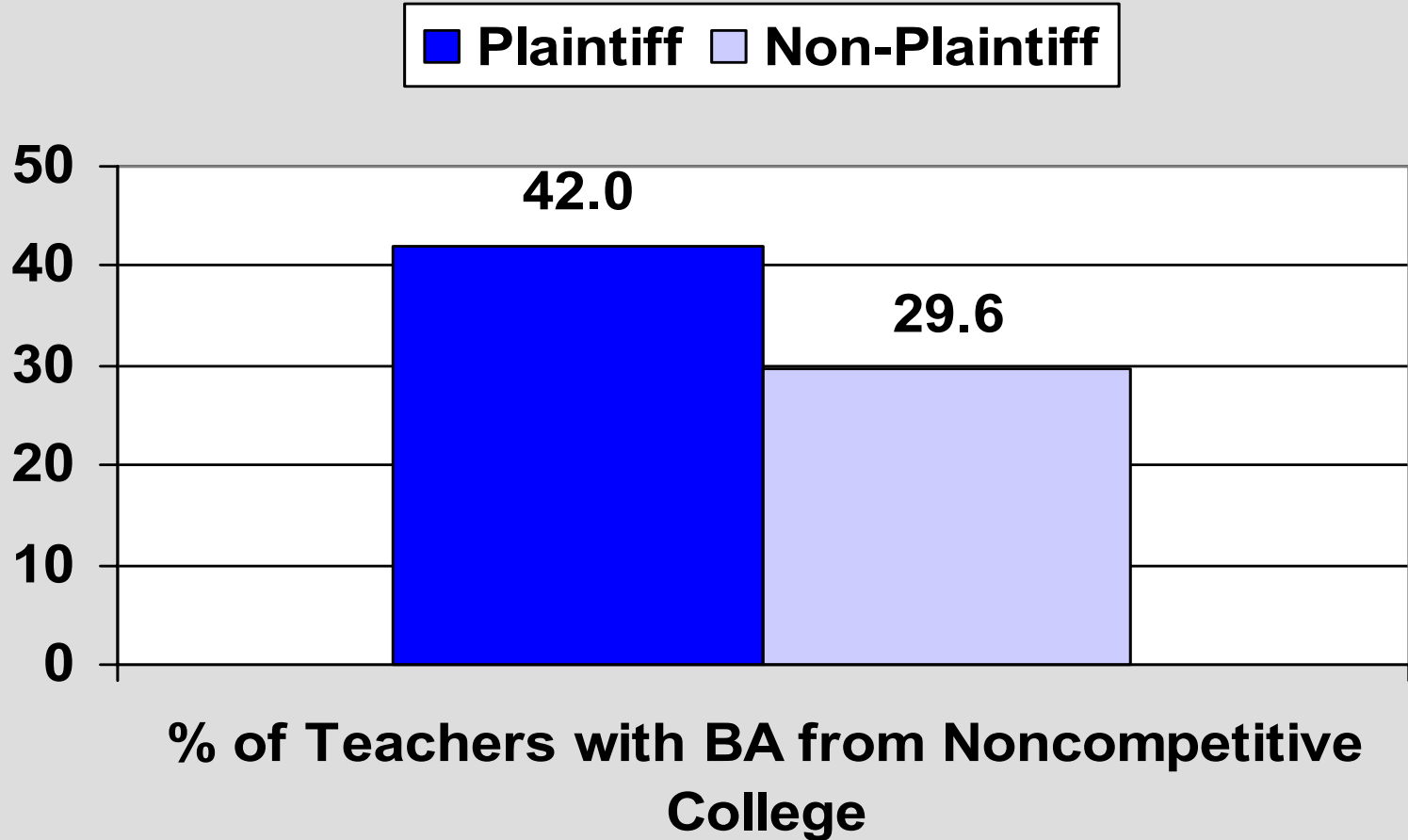
% of Teachers with Out-of-Field Permits

Student Characteristics and Teacher Qualifications For Plaintiff & Non-Plaintiff Districts



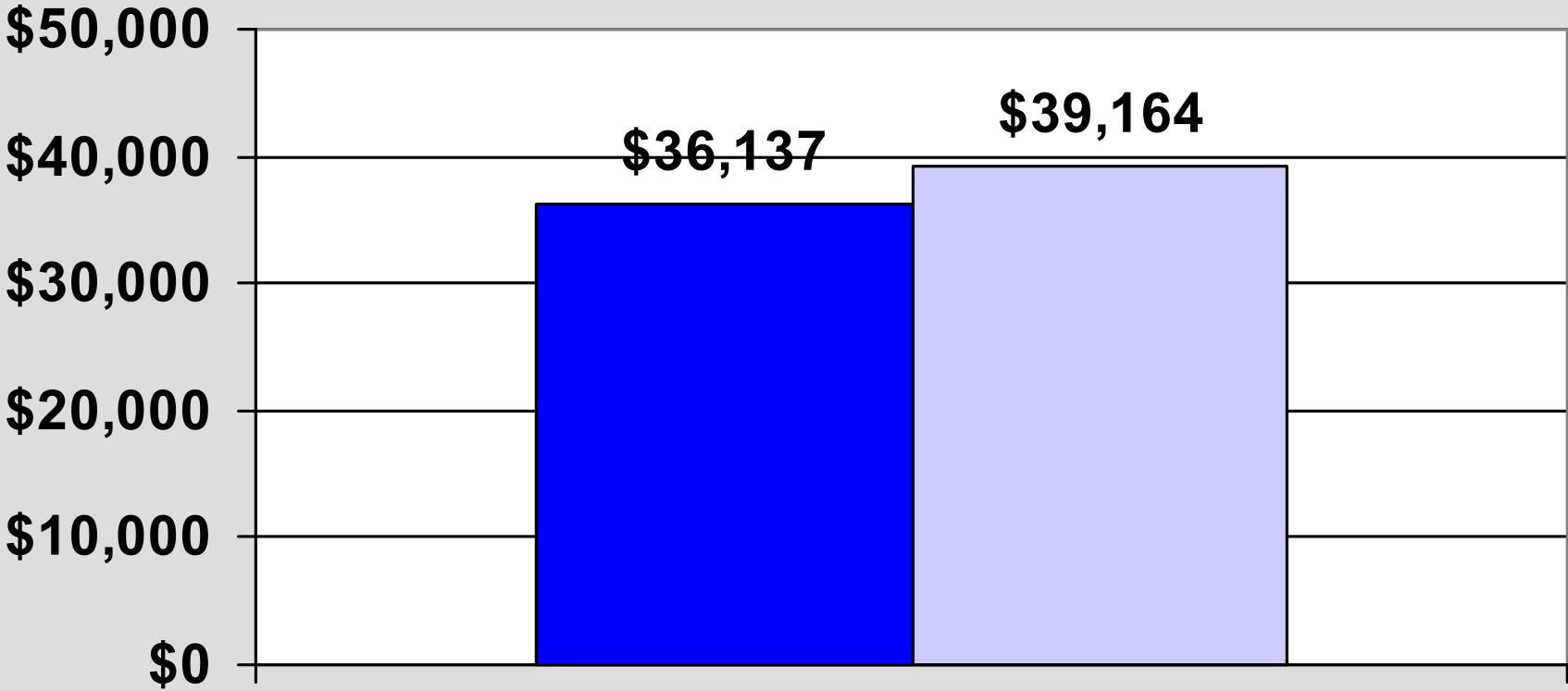
% of Teachers with Substandard Certificates

Student Characteristics and Teacher Qualifications For Plaintiff & Non-Plaintiff Districts



Average Teacher Salaries For Plaintiff & Non-Plaintiff Districts

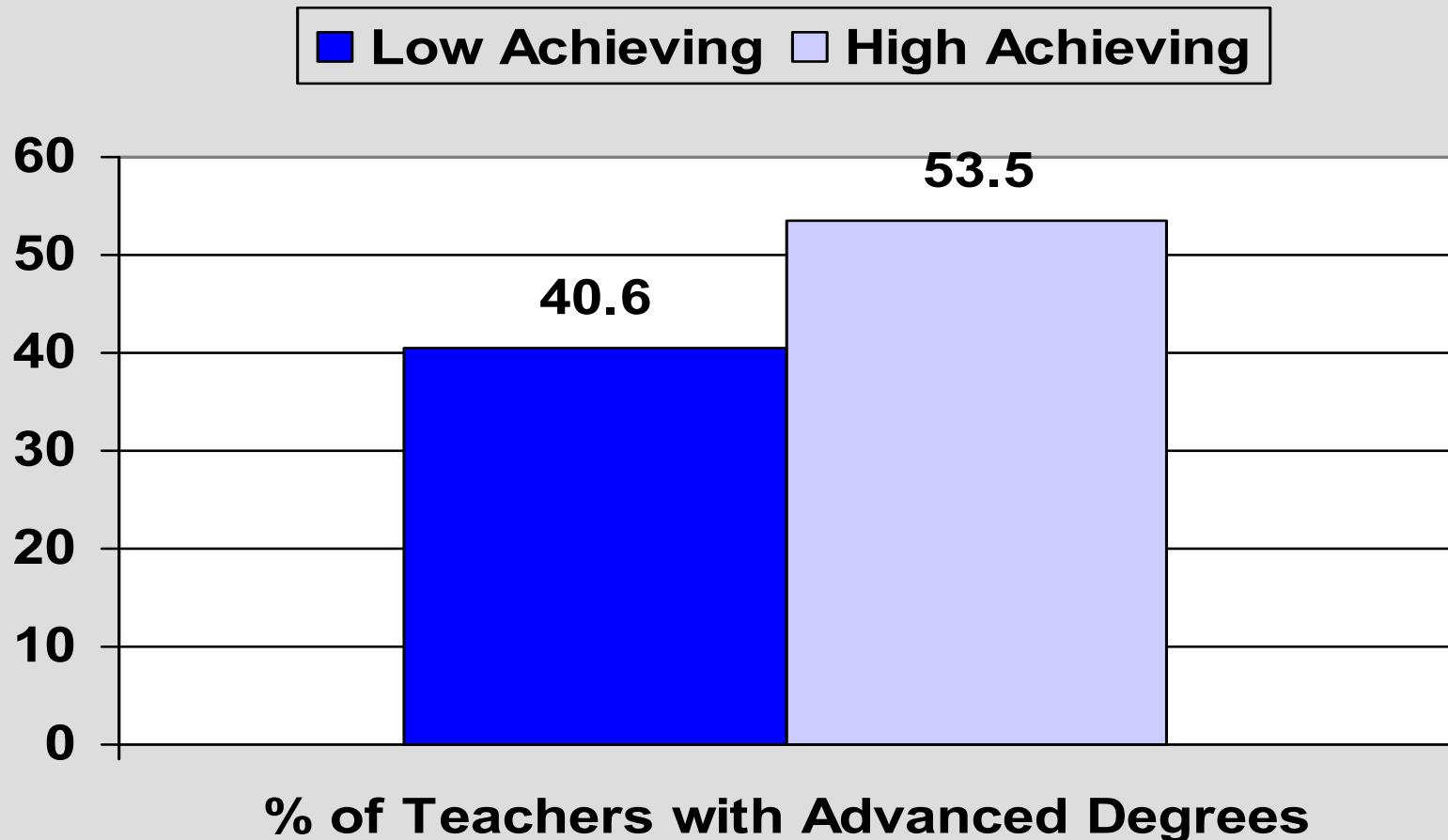
■ Plaintiff ■ Non-Plaintiff



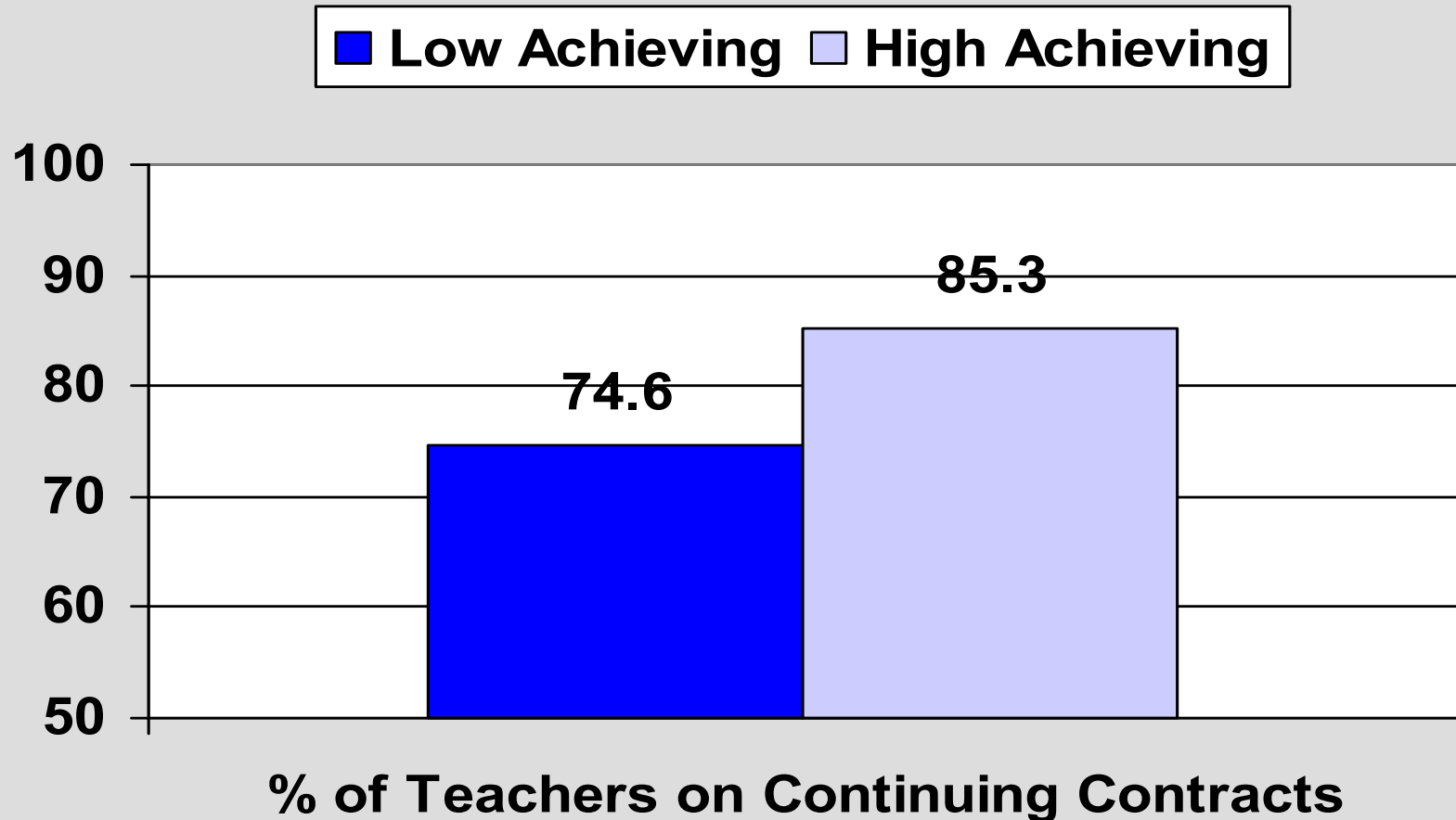
Teacher Salaries

50070

Differences in Teacher Qualifications across Districts, By Achievement Levels of Students (% Students Scoring Below Basic)

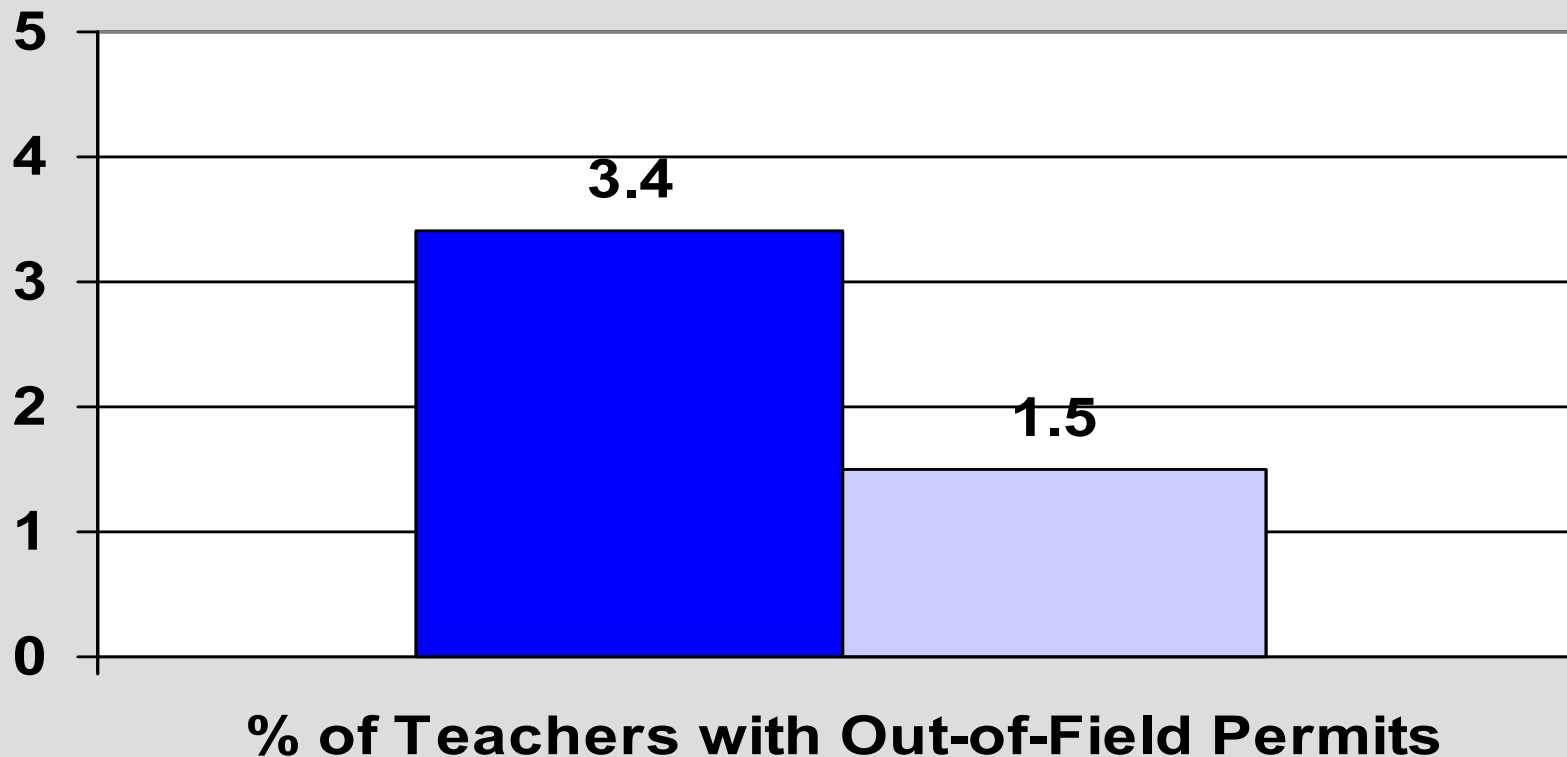


Differences in Teacher Qualifications across Districts, By Achievement Levels of Students (% Students Scoring Below Basic)



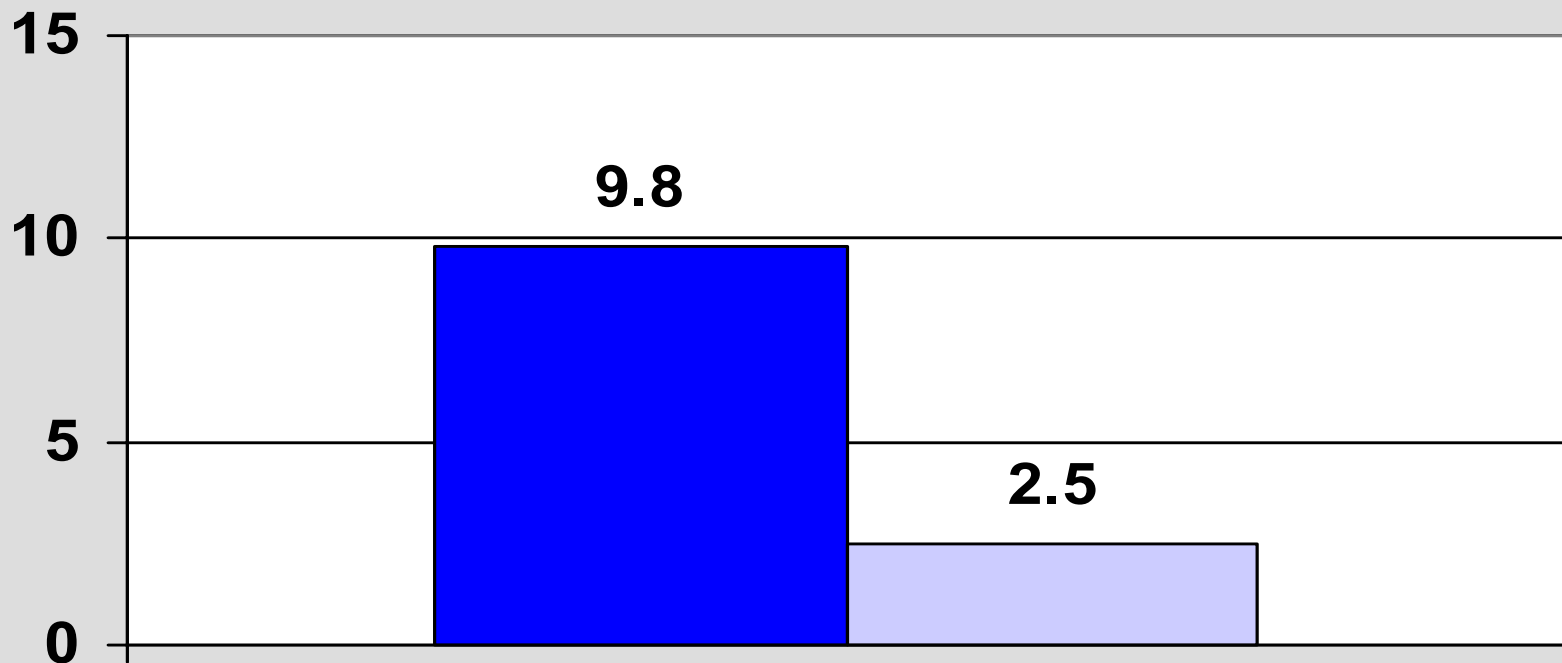
Differences in Teacher Qualifications across Districts, By Achievement Levels of Students (% Students Scoring Below Basic)

■ Low Achieving ■ High Achieving



Differences in Teacher Qualifications across Districts, By Achievement Levels of Students (% Students Scoring Below Basic)

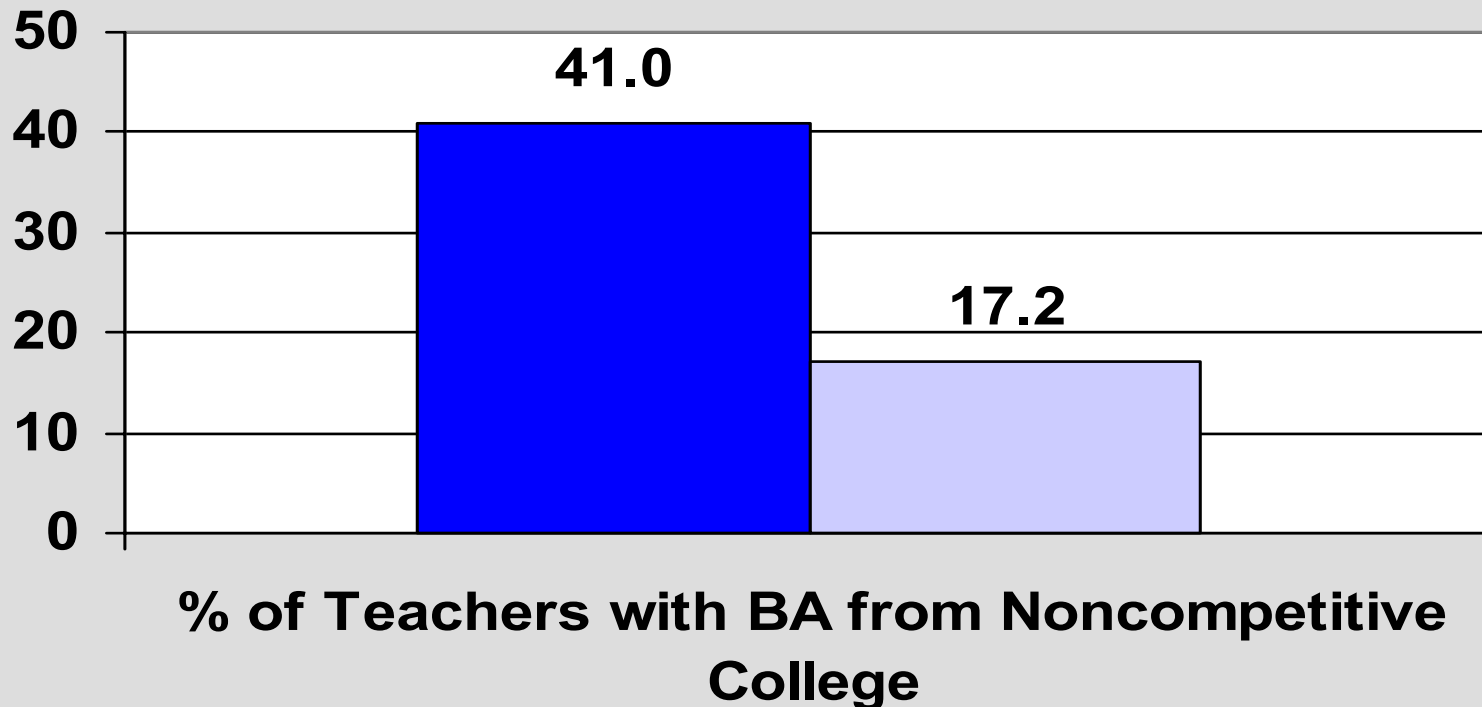
■ Low Achieving ■ High Achieving



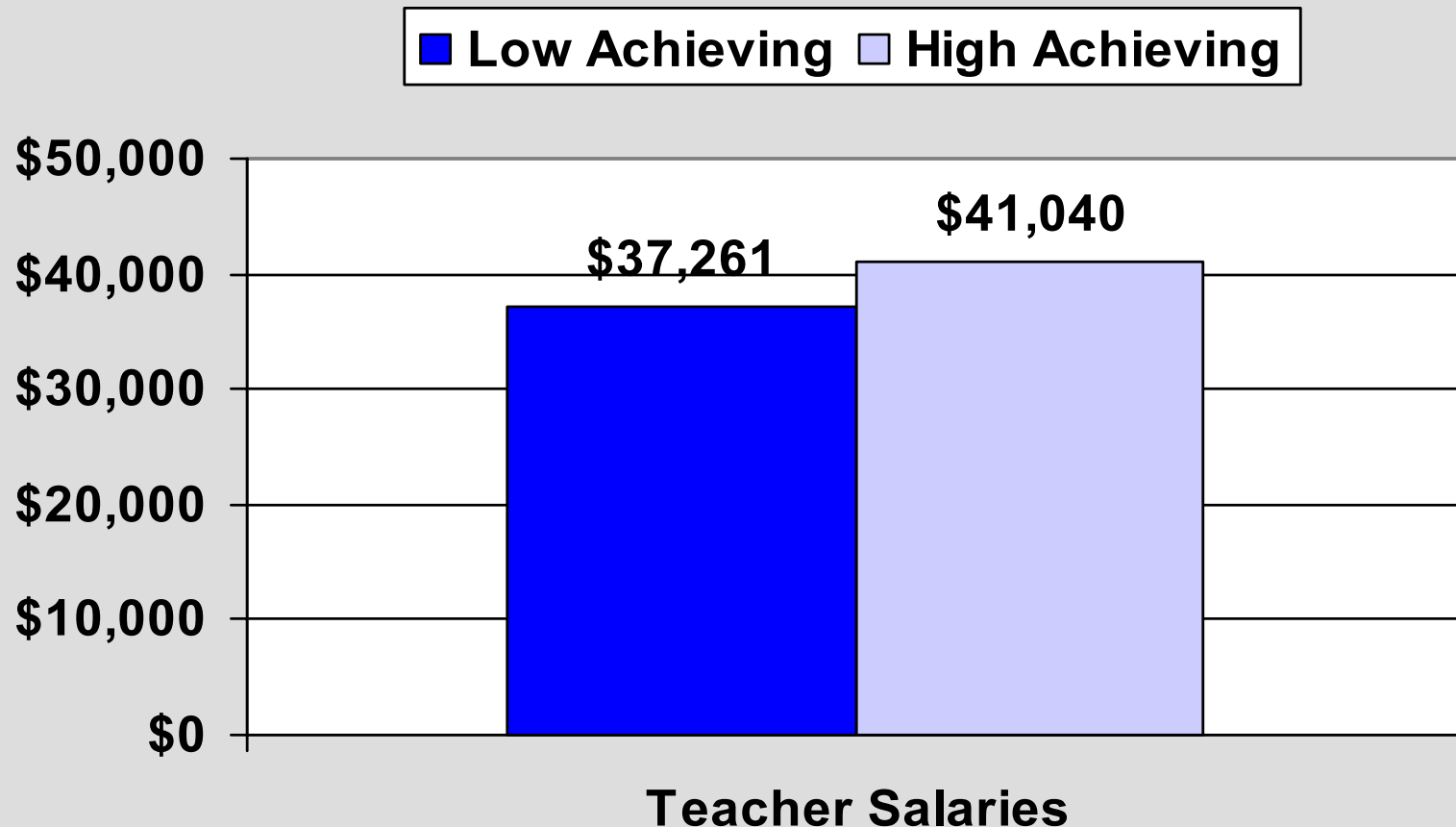
% of Teachers with Substandard Certificates

Differences in Teacher Qualifications across Districts, By Achievement Levels of Students (% Students Scoring Below Basic)

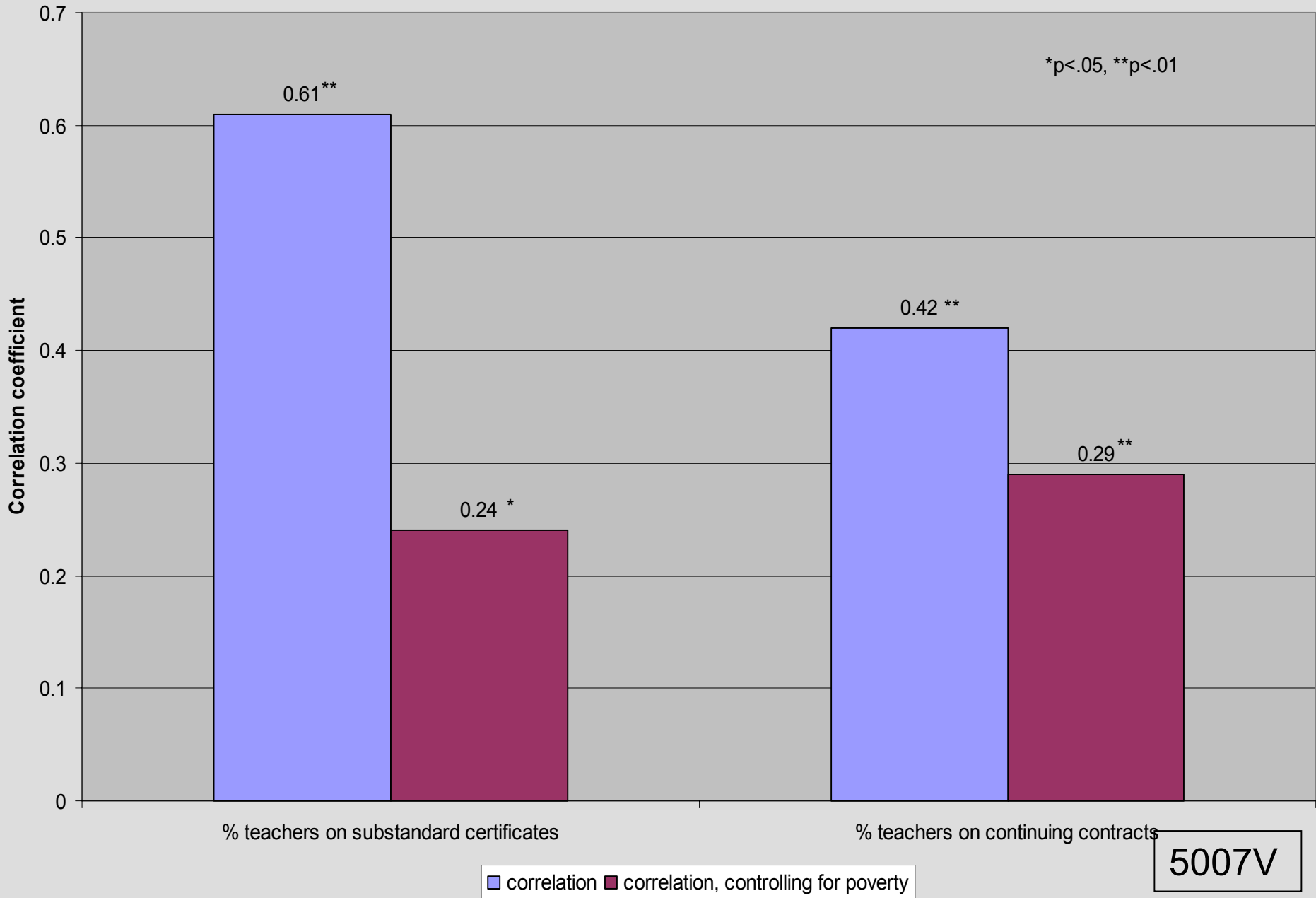
■ Low Achieving ■ High Achieving



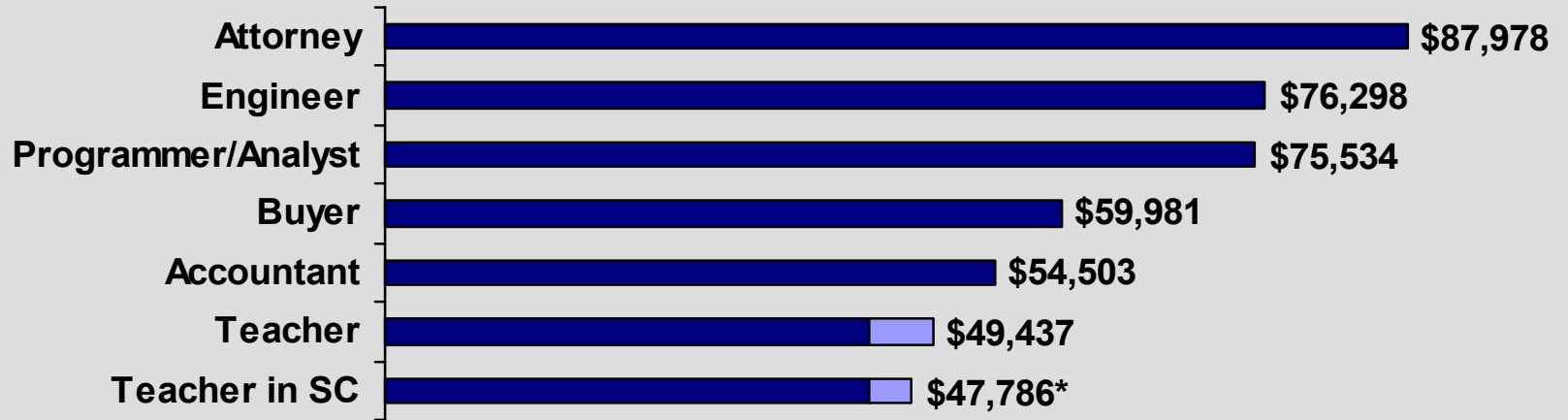
Differences in Teacher Qualifications across Districts, By Achievement Levels of Students (% Students Scoring Below Basic)



Correlations of teacher qualifications with % of students scoring below basic



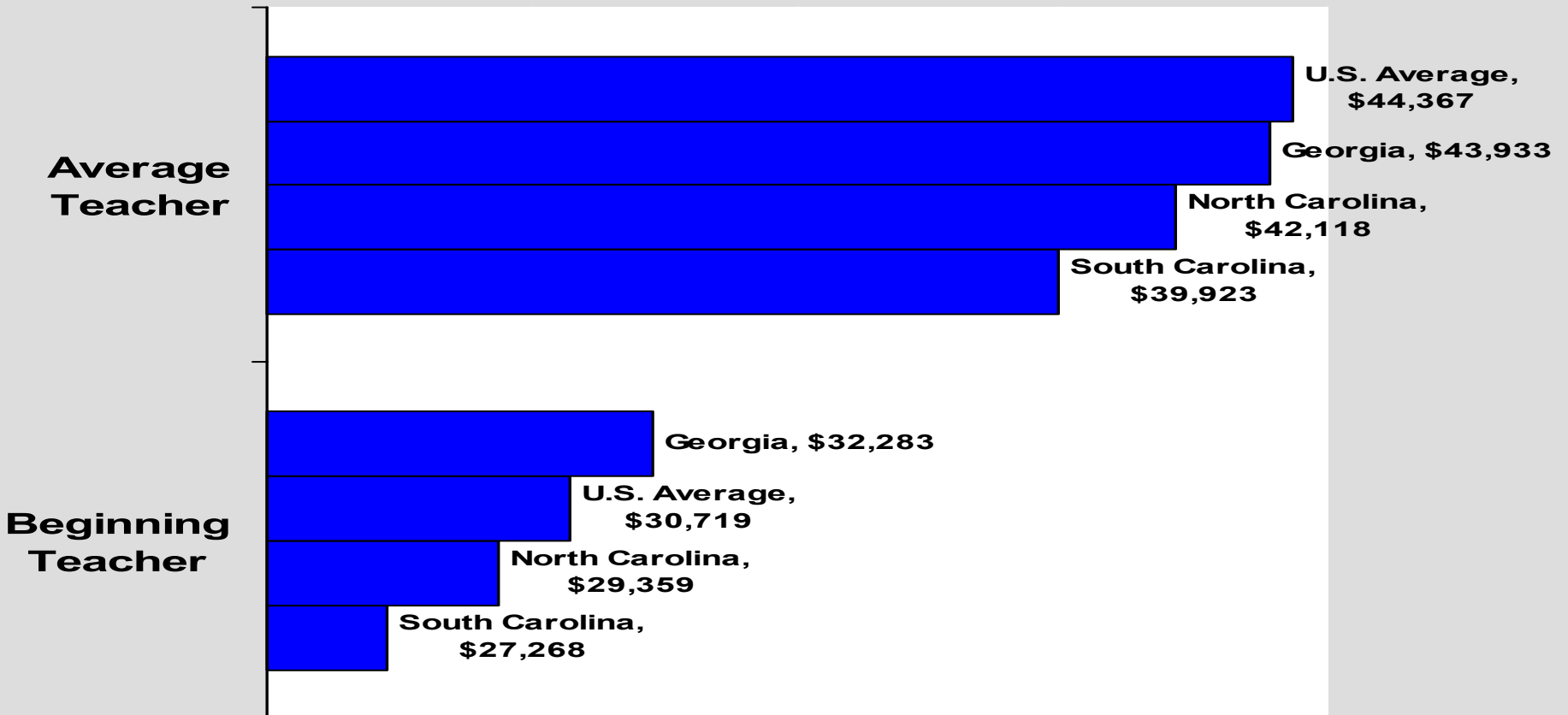
Annualized Average Teacher Salary in 2002 and Earnings in Other Professions



■ Average Teacher Salary
 ■ Annualized Teacher Pay

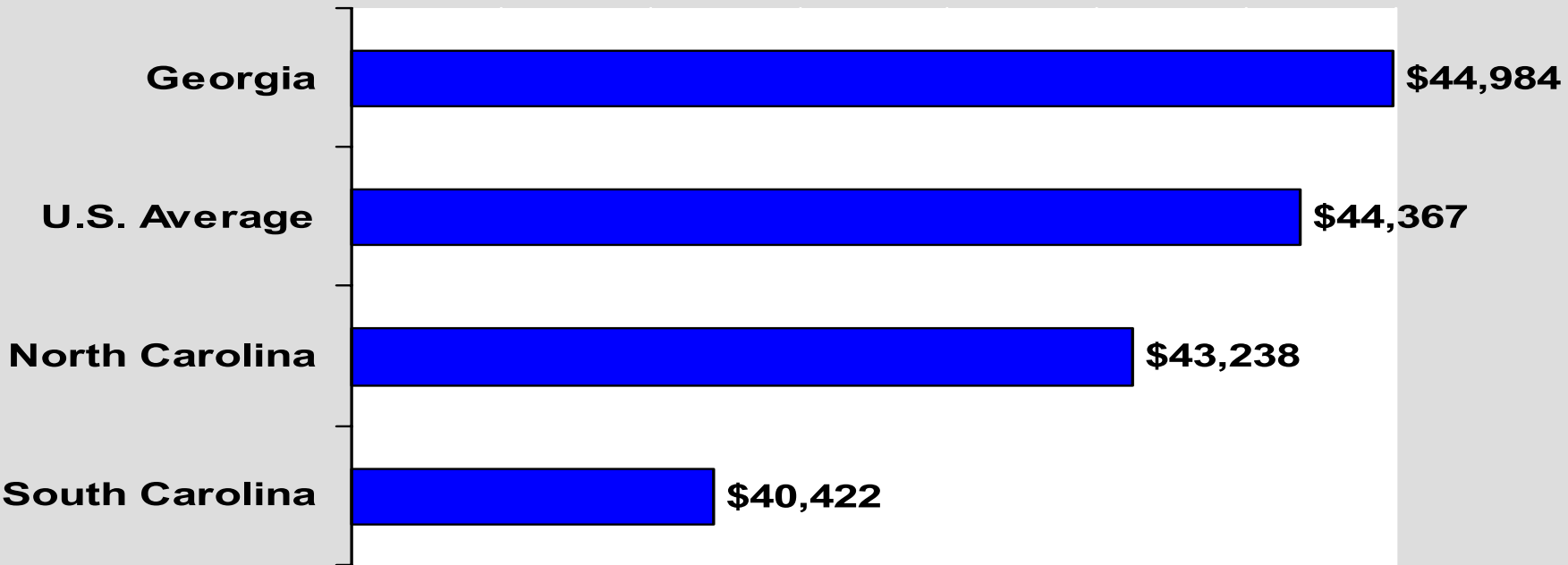
* The annualized salary total of \$47,786 is calculated by adding the \$44,247 South Carolina average teacher salary (adjusted for cost of living) plus \$3,539 average total summer earnings for South Carolina teachers aggressively seeking summer work (those earning more than \$1,000 in non-school jobs. Sources: American Federation of Teachers, *Survey and Analysis of Teacher Salary Trends 2002*. Data used to calculate cost-of-living from the American Chamber of Commerce Researchers Association (ACCRA, 2001).). Estimate of average summer earnings based on USDOE, 1999-2000 Schools and Staffing Survey (SASS) and adjusted for inflation at the rate of 6% annually for 2000-01 and 2001-02.

Average & Beginning Teacher Salary 2001-02



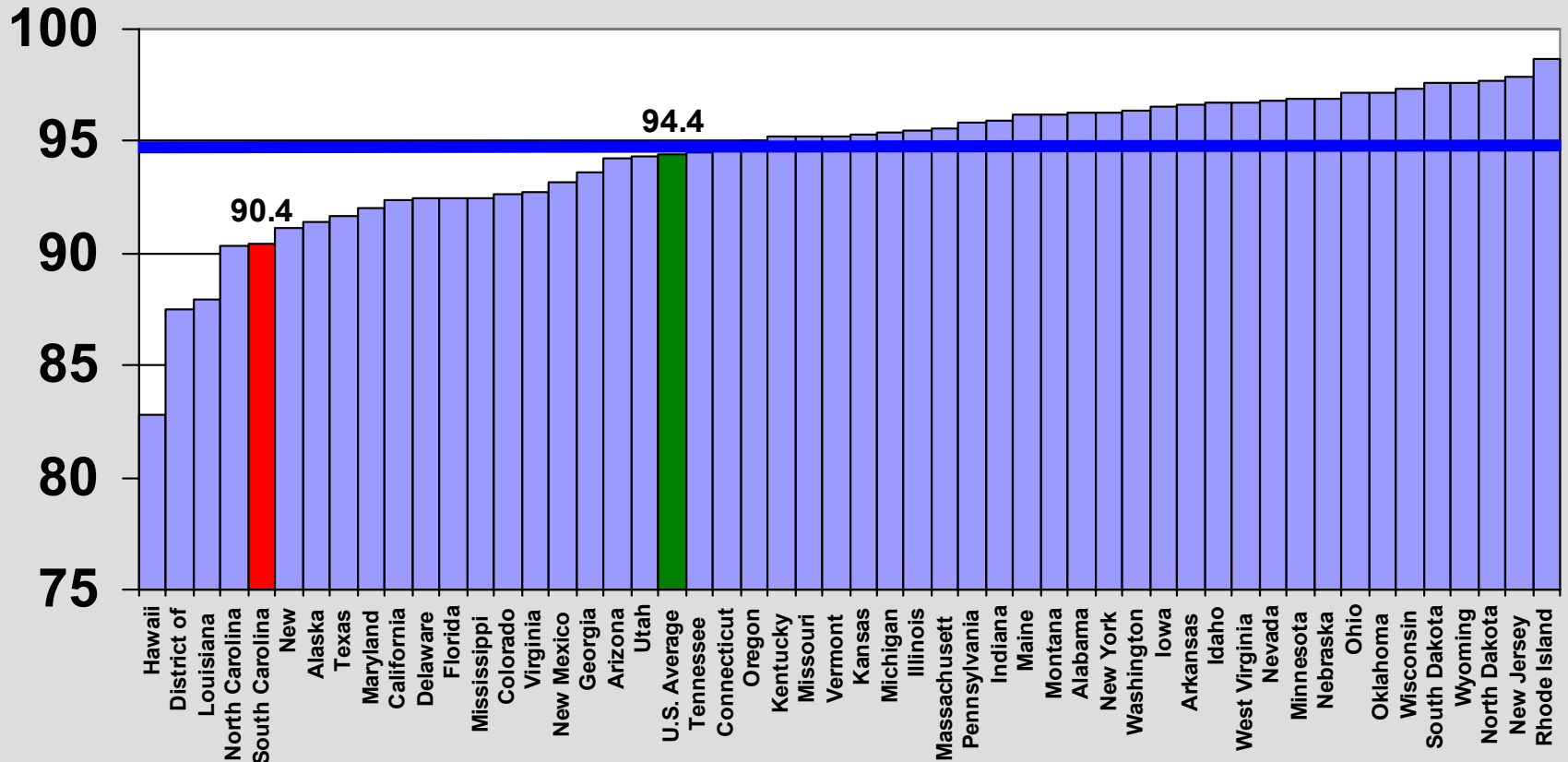
Source: F.H. Nelson & R. Drown (2002). *Survey and analysis of teacher salary trends, 2002*. Washington, DC: American Federation of Teachers, Table 1-2, Average and Beginning Teacher Salary in 2001-02 Ranked by Average Salary Within Region.

Average Salary Adjusted for Years of Teaching Experience 2001-02



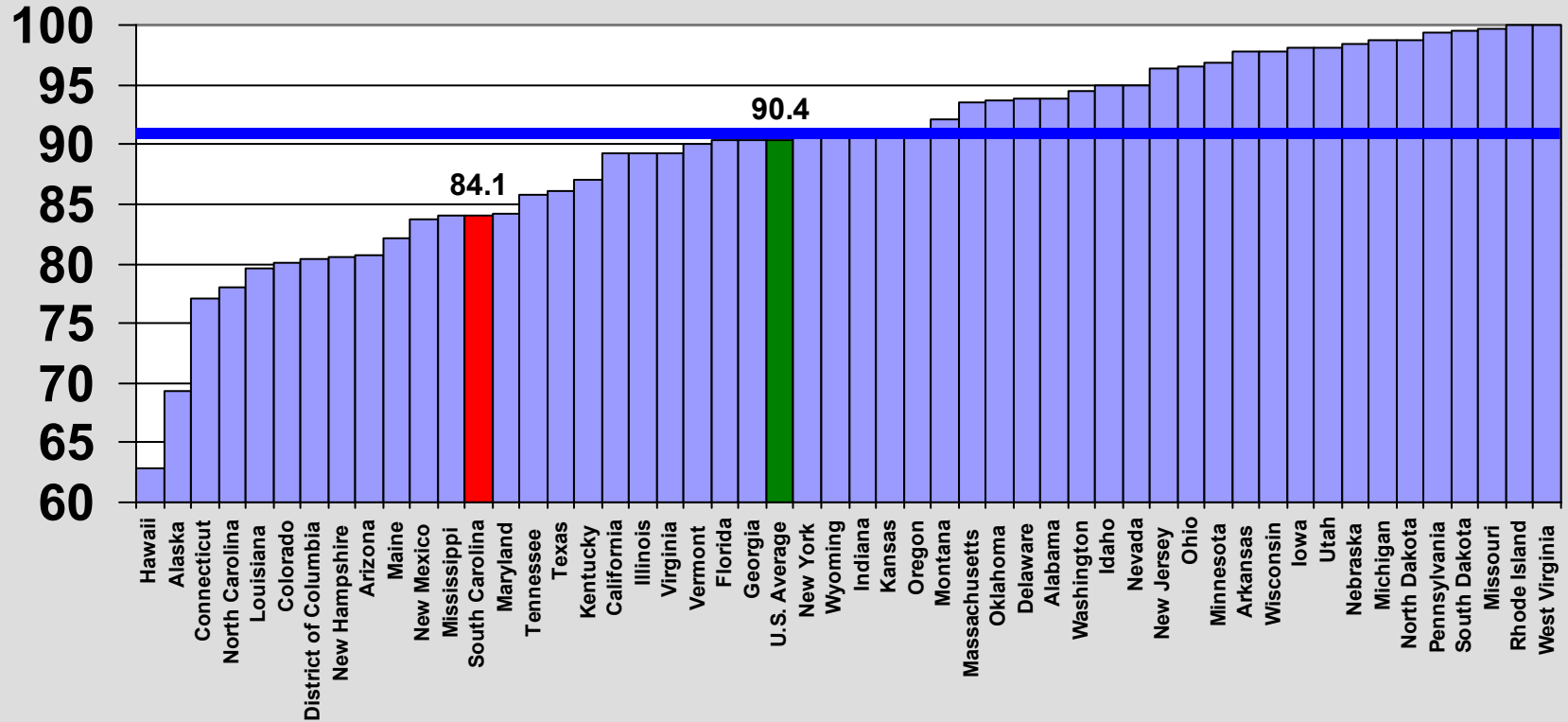
Source: F.H. Nelson & R. Drown (2002). *Survey and analysis of teacher salary trends, 2002*. Washington, DC: American Federation of Teachers, Table 1-9, State Rankings by 2001-02 Average Teacher Salary Adjusted for Differences in Teaching Experience Among States.

Percent of Teachers with Standard Certification in Main Assignment Area



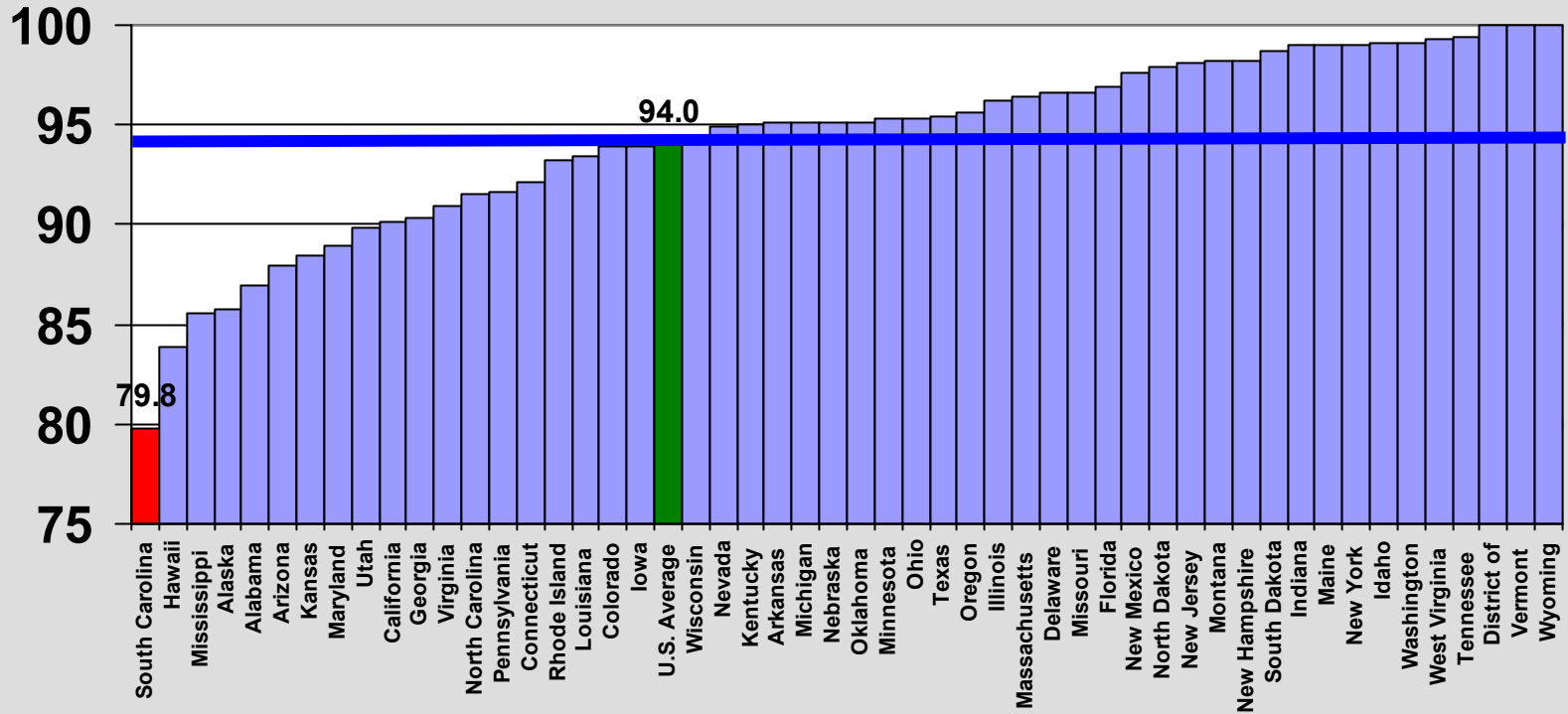
Source: U.S. Department of Education, 1999-2000 Schools and Staffing Surveys

Percent of Math Teachers with Standard Certification



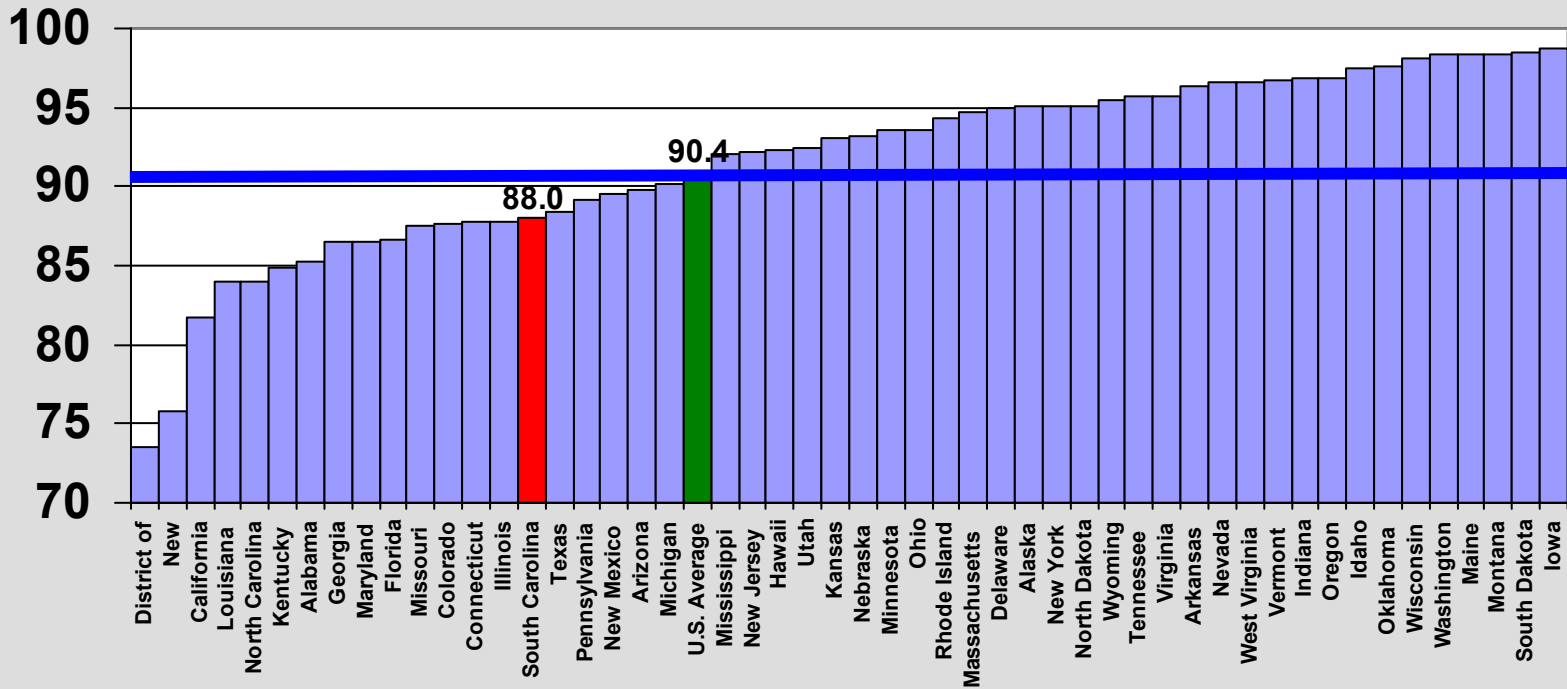
Source: U.S. Department of Education, 1999-2000 Schools and Staffing Surveys

Percent of English Teachers with Standard Certification



Source: U.S. Department of Education, 1999-2000 Schools and Staffing Surveys

Percent of Science Teachers with Standard Certification



Source: U.S. Department of Education, 1999-2000 Schools and Staffing Surveys

Dependent Variable: % below basic, all students

		Coefficients											
		Standardized	t	Sig.	Standardized	t	Sig.	Standardized	t	Sig.	Standardized	t	Sig.
		Coefficients			Coefficients			Coefficients			Coefficients		
		Beta			Beta			Beta			Beta		
Model 1	(Constant)		.537	.593		1.218	.227		.633	.529		.100	.921
	poverty index	.615	5.619	.000	.615	5.983	.000	.596	5.389	.000	.663	5.154	.000
	% black students	.296	2.706	.008	.128	1.109	.271	.122	1.026	.308	.077	.607	.546
Model 2	substandard certificates				.333	2.735	.008	.304	2.422	.018	.266	2.063	.043
	Out-of-field permit teachers				-.196	-1.647	.104	-.173	-1.443	.153	-.155	-1.251	.215
	Continuing contract status teachers				-.065	-1.151	.253	-.053	-.915	.363	-.057	-.957	.342
	% portable classrooms				-.084	-1.257	.212	-.098	-1.459	.149	-.100	-1.474	.145
	student-teacher ratio				.006	.115	.909	.014	.245	.807	.016	.262	.794
Model 3	average teacher salary							-.013	-.180	.857	.012	.137	.891
	vacancies for more than 9 weeks							.076	1.307	.195	.057	.883	.380
Model 4	% uncompetitive bachelor's										.043	.660	.511
	% out-of-state teachers										.075	1.303	.197
	Advanced degree teachers										-.015	-.178	.860

R	R Square	Model Summary	Std. Error of the Estimate
.918	.843	Adjusted R Square	4.8817
		.817	