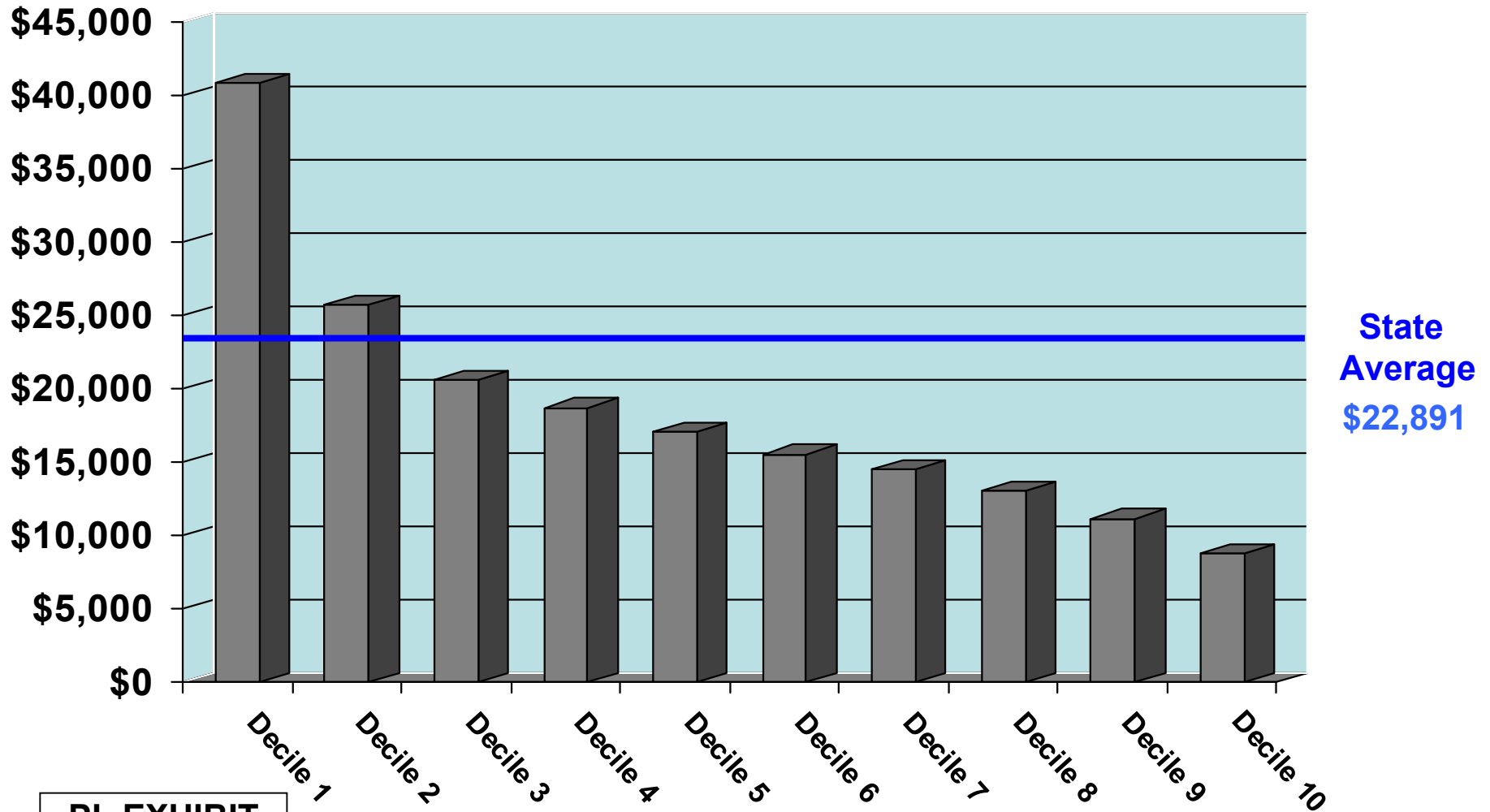
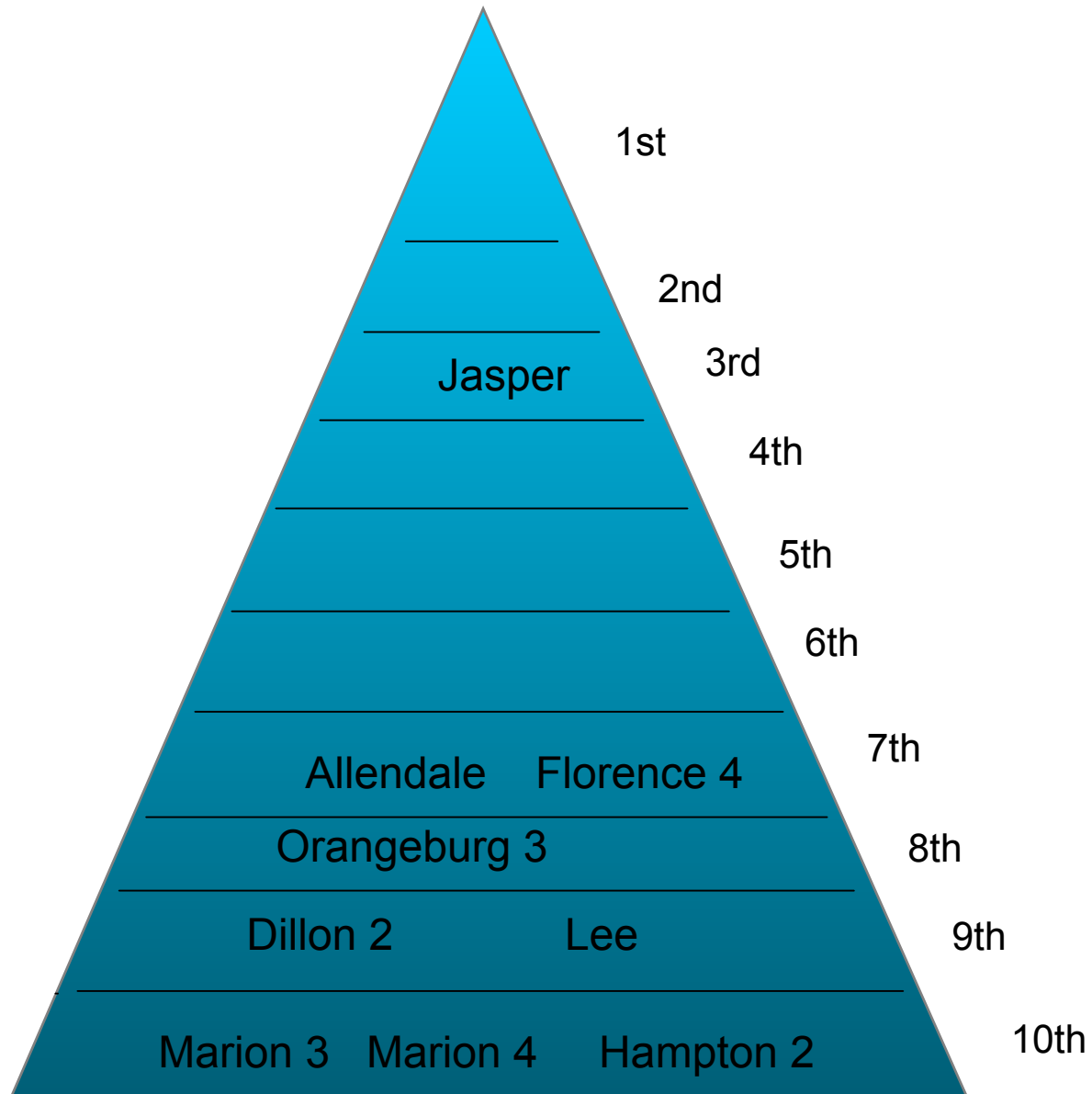


Weighted Average Per Pupil Wealth by Deciles vs. State Average



PL EXHIBIT
6230A

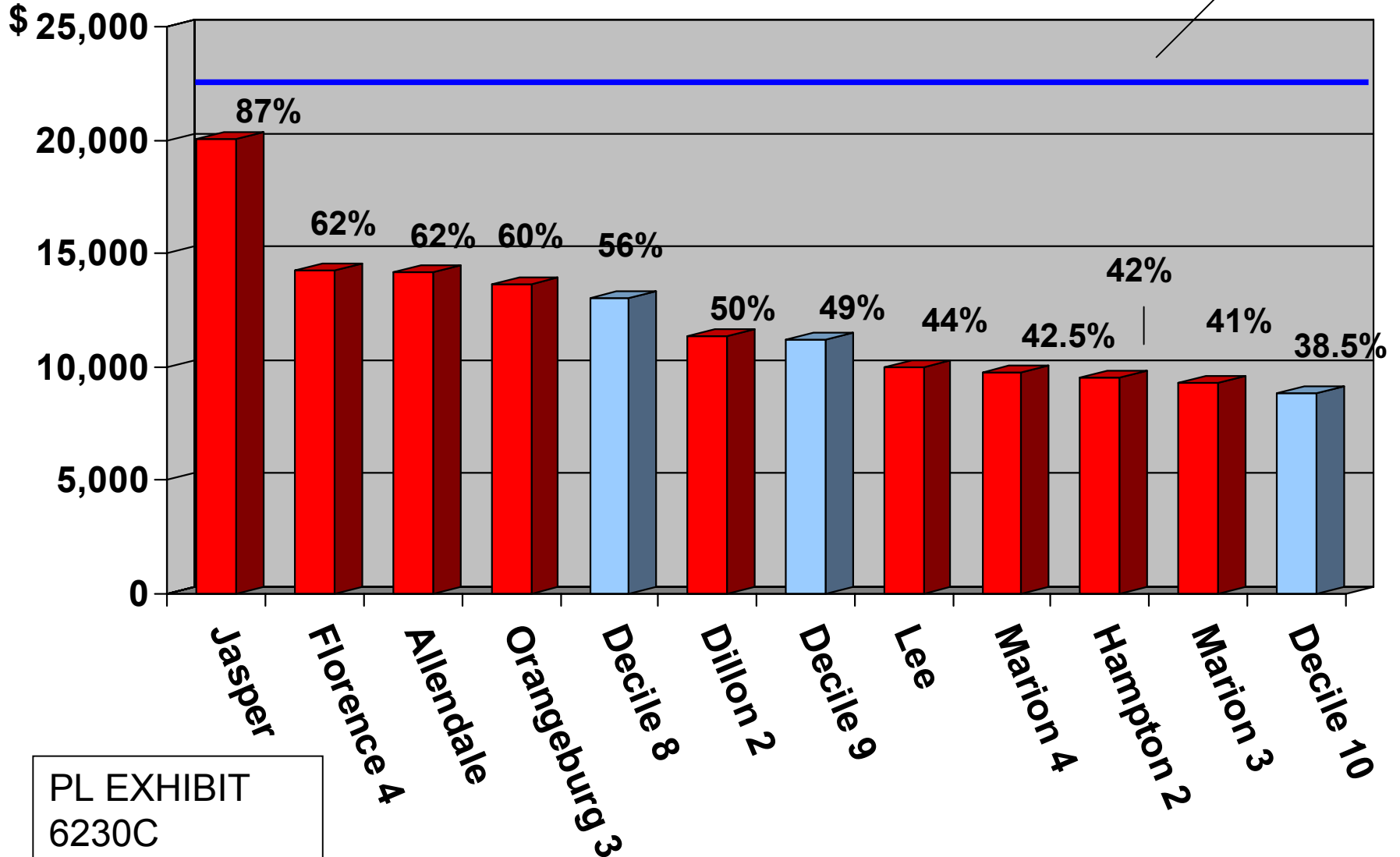
Plaintiff Districts' Rank Among Deciles by Wealth



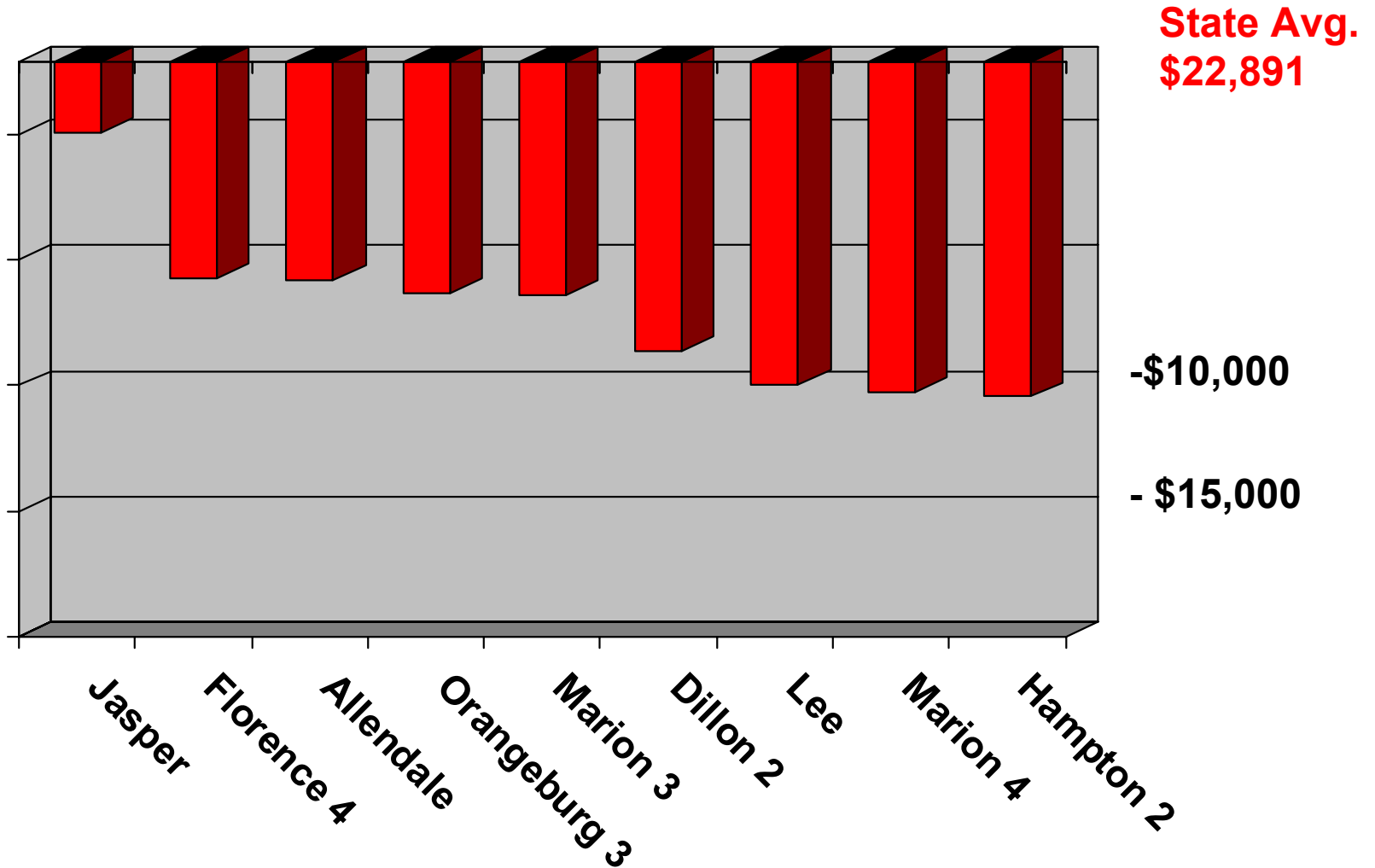
**PL EXHIBIT
6230B**

Plaintiff Districts by Per Pupil Wealth

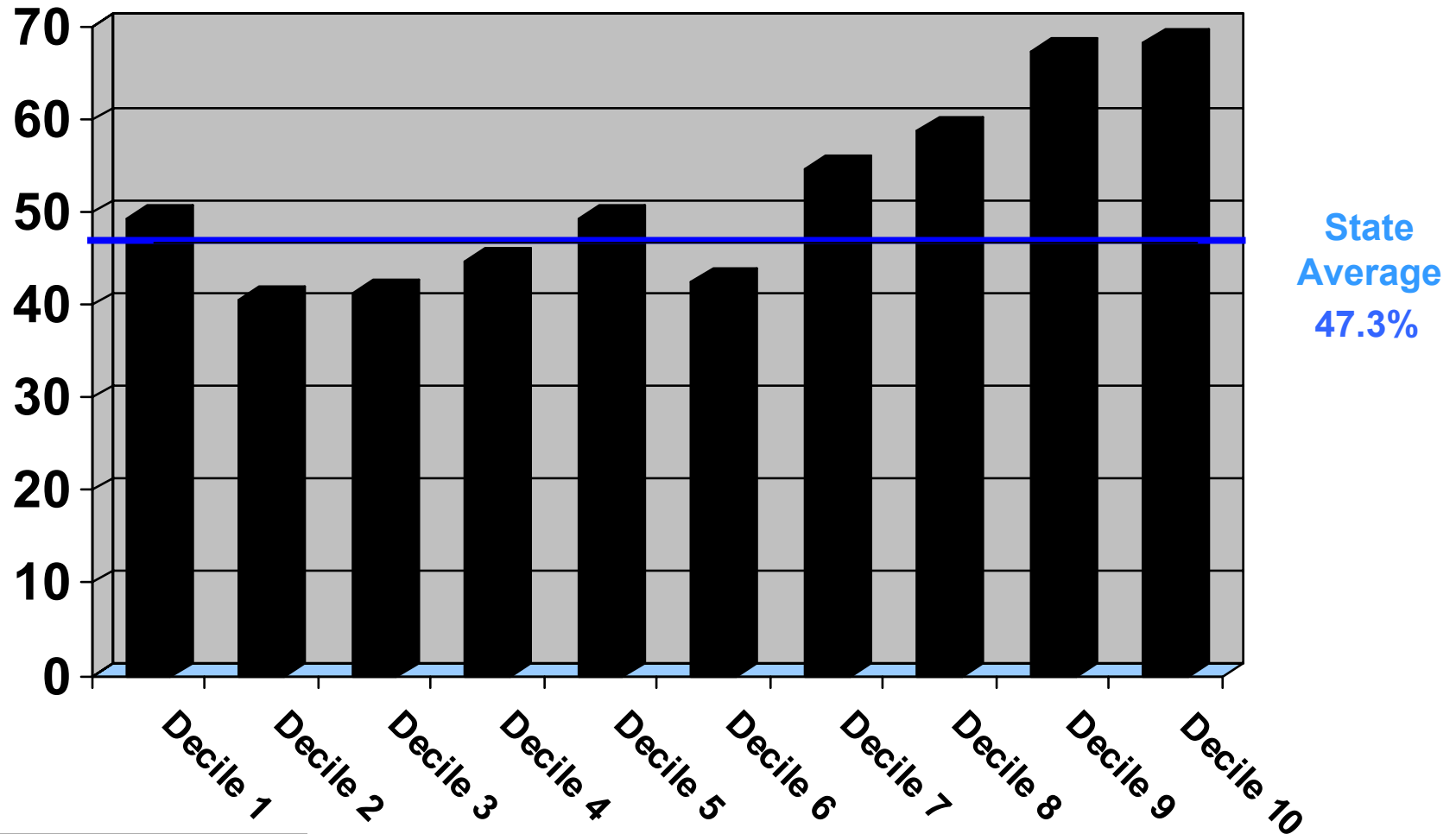
State Avg
\$22,891



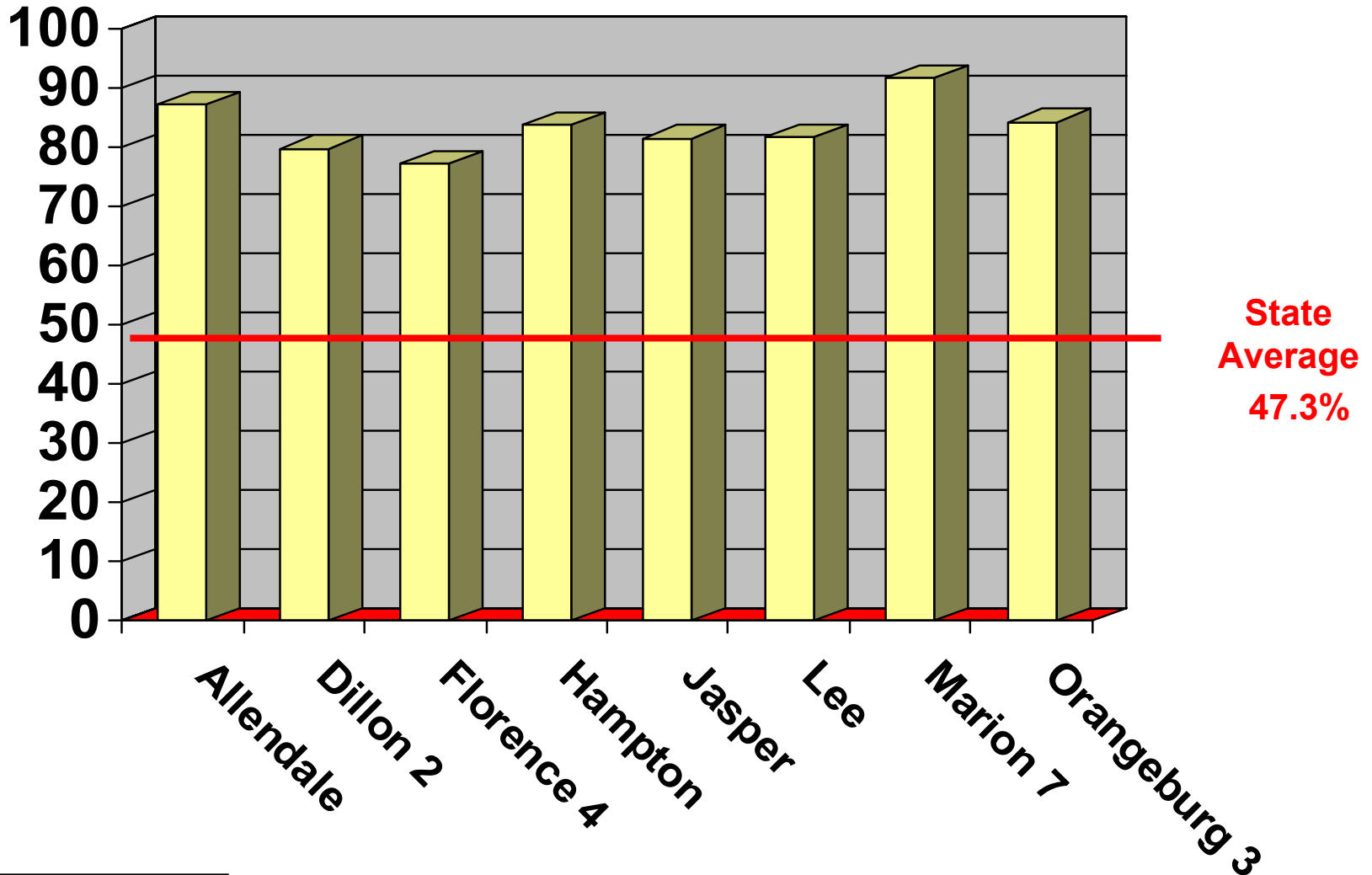
Plaintiff Districts' Gap to State Average Per Pupil Wealth



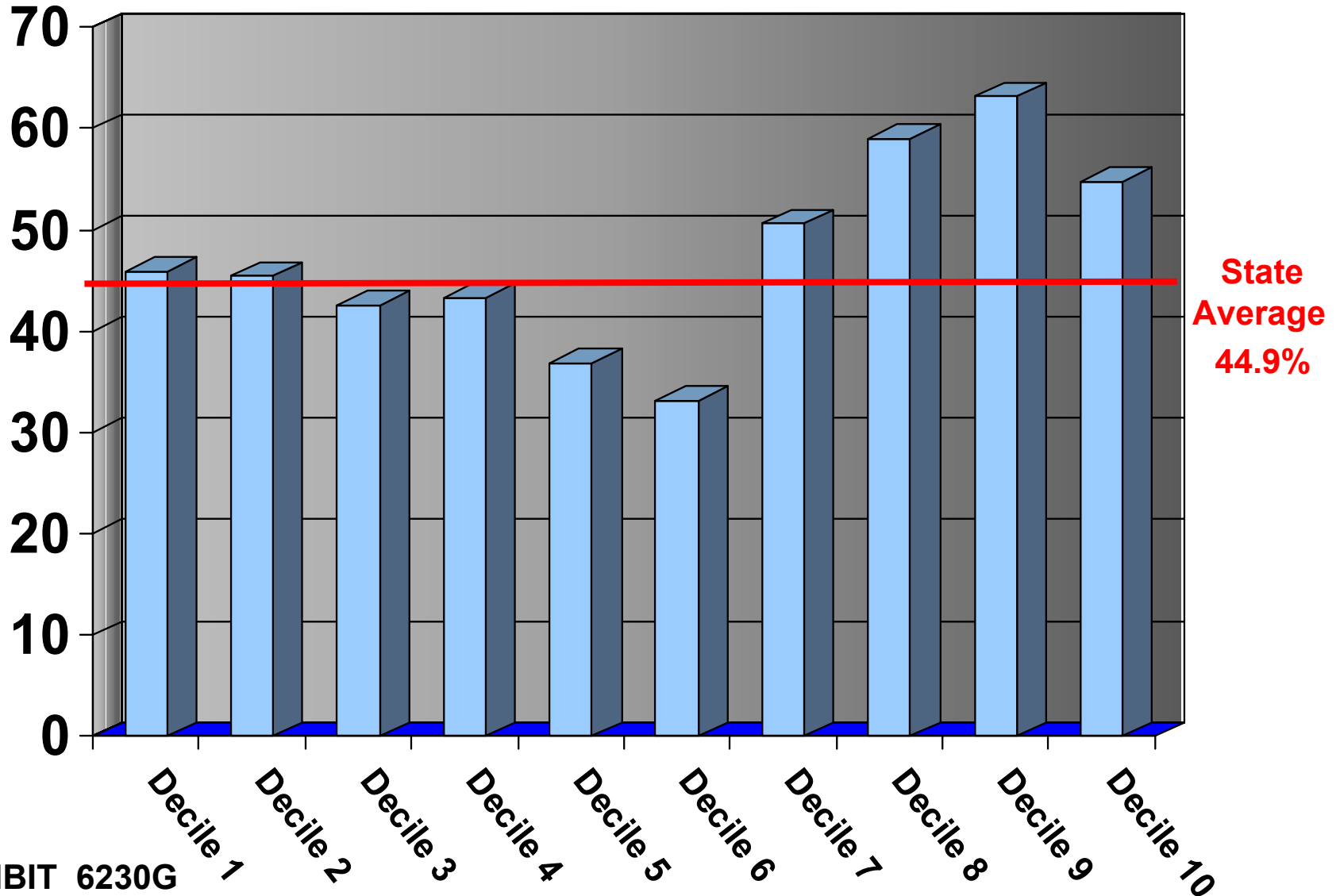
Average Percentage of Students on F/R Lunch by Wealth Deciles



Percentage Students F/R Lunch in Plaintiff Districts

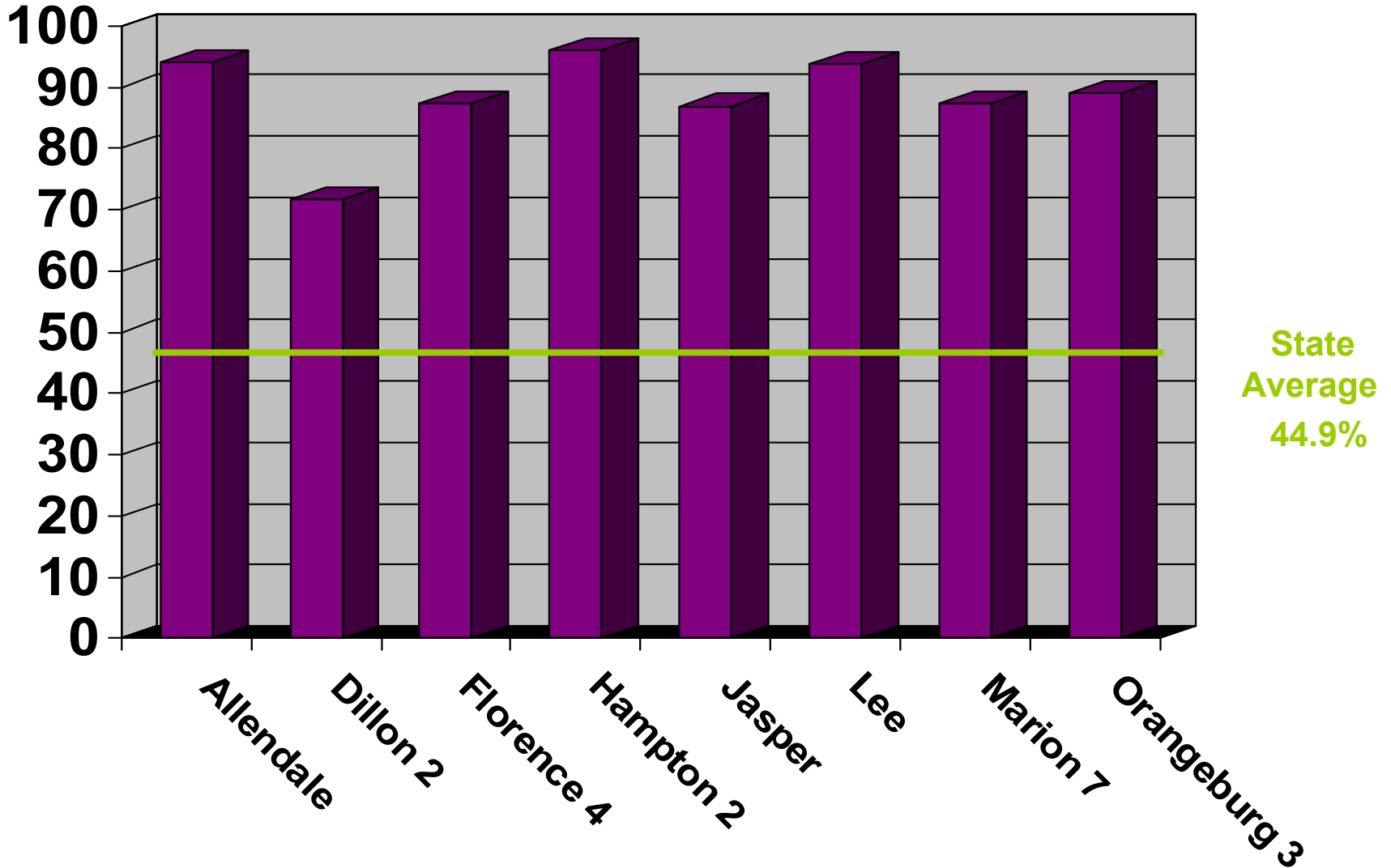


Average Percentage Minority Students by District Wealth Deciles

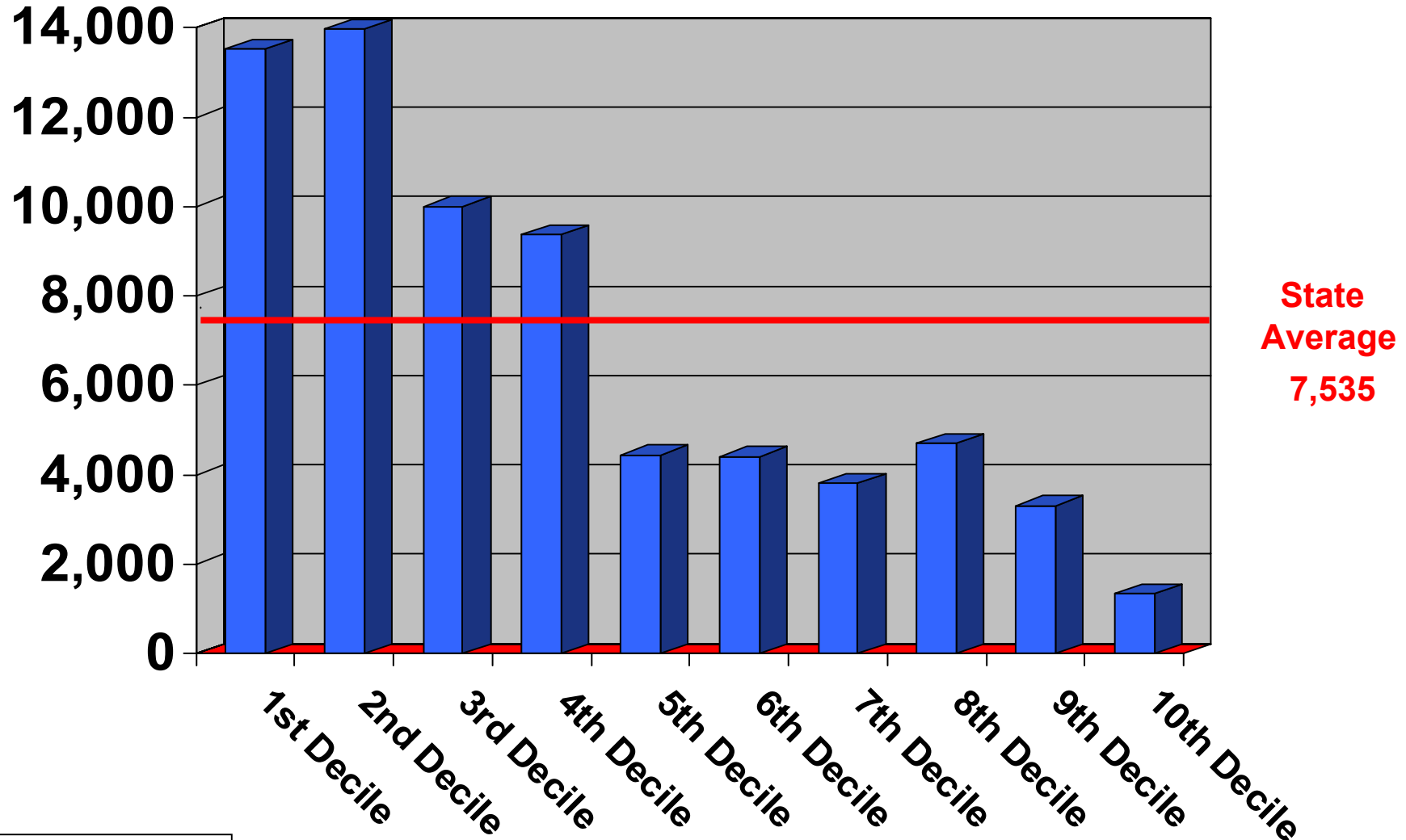


**State
Average
44.9%**

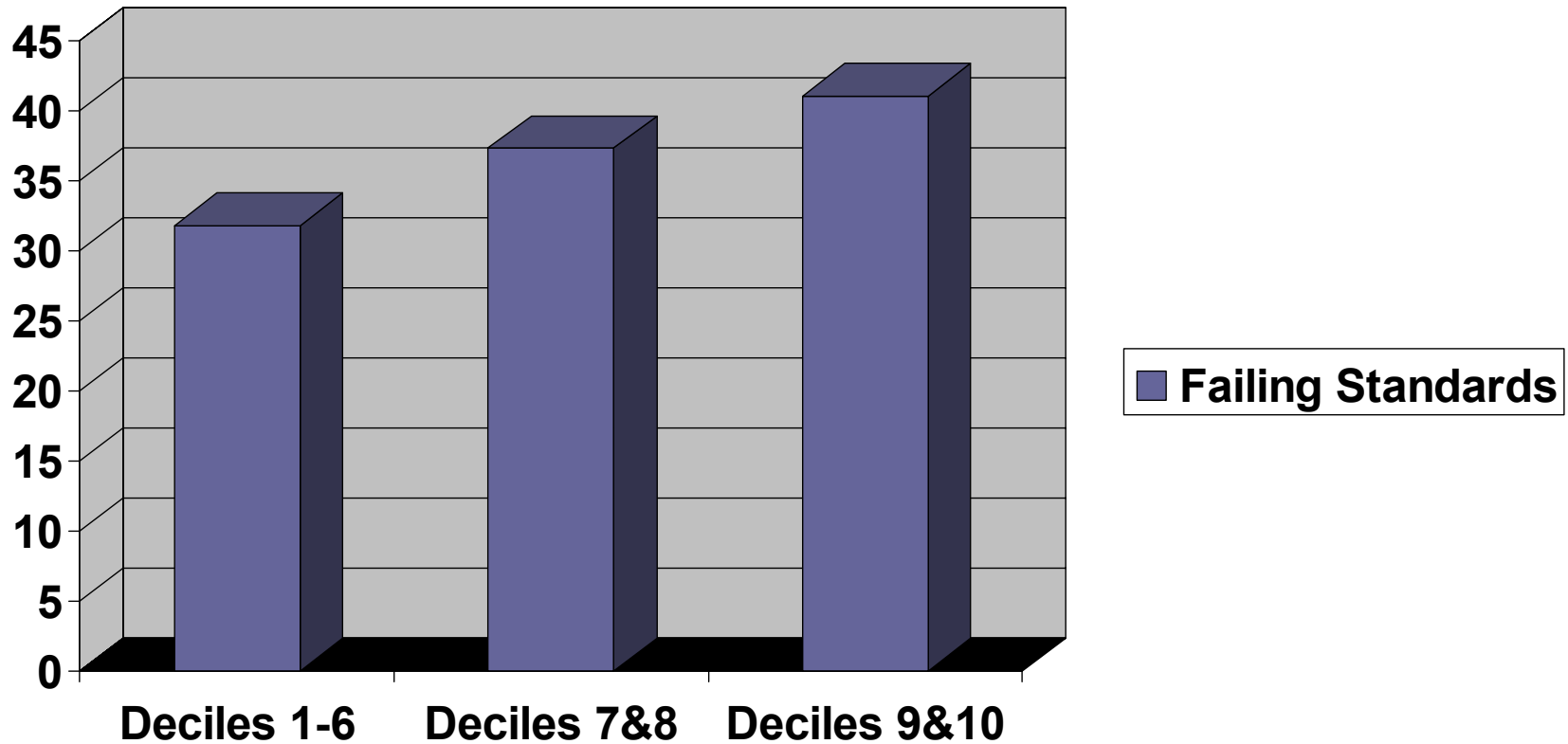
Percentage Minority Students in Plaintiff Districts



Average District Enrollment By Deciles



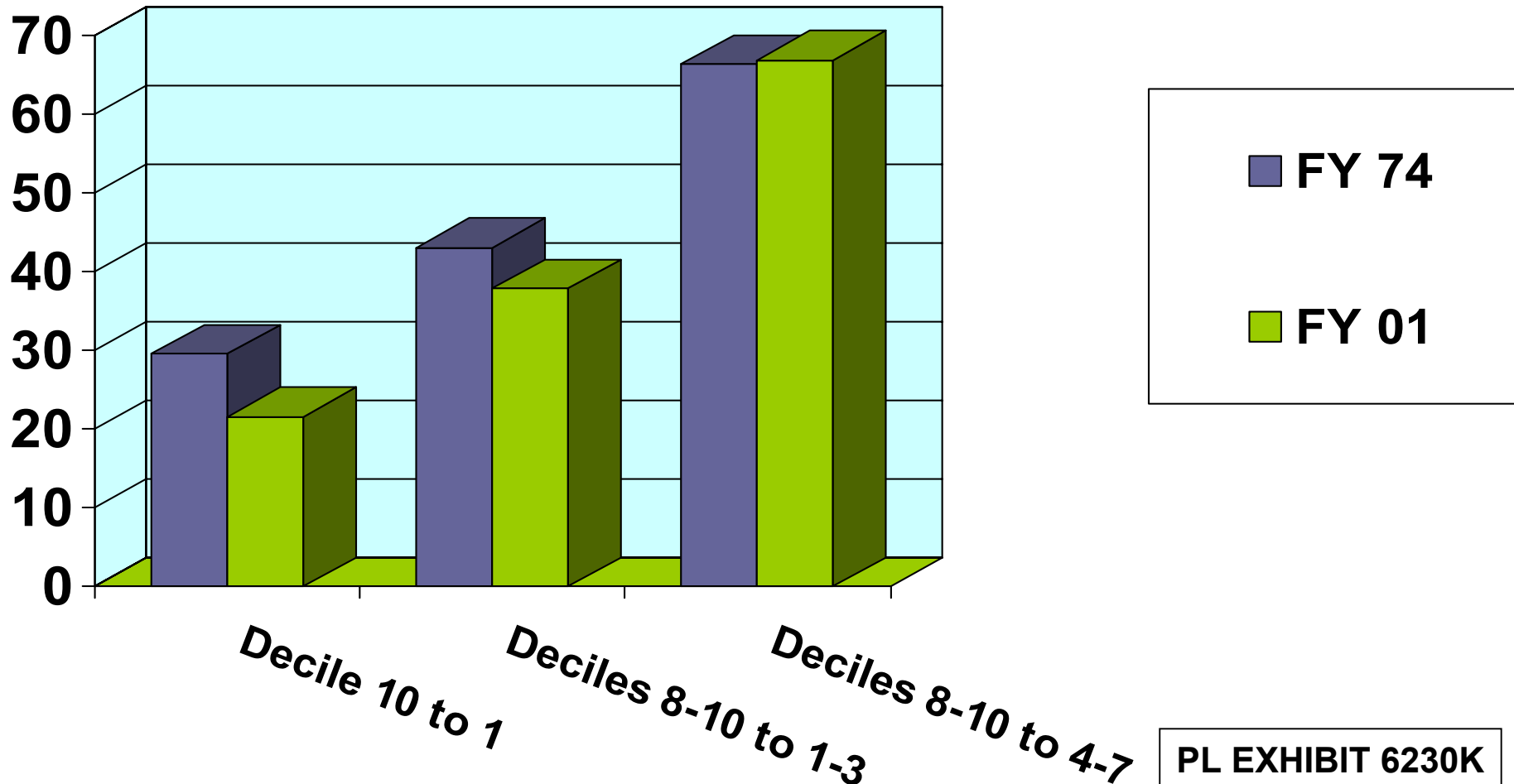
Percentage of Students in Grades 8 & 10 Failing Academic Standards*



* Failing standards means scoring Below Basic on PACT in Grade 8 and failing Exit Exam in Grade 10

PL EXHIBIT 6230J

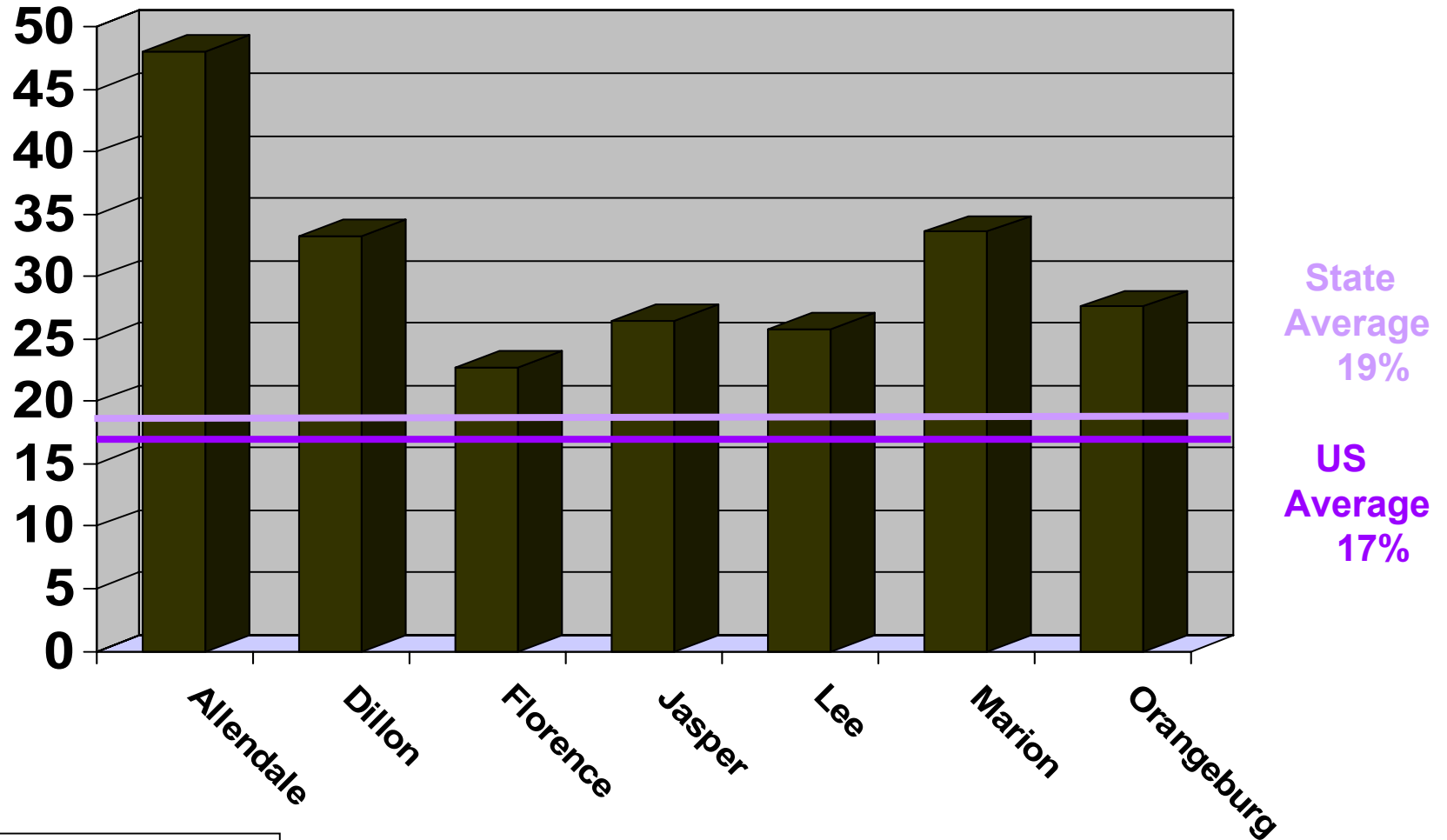
Districts' Wealth Per Pupil by Decile Group: 1974 vs. 2001



CHILDREN IN POVERTY

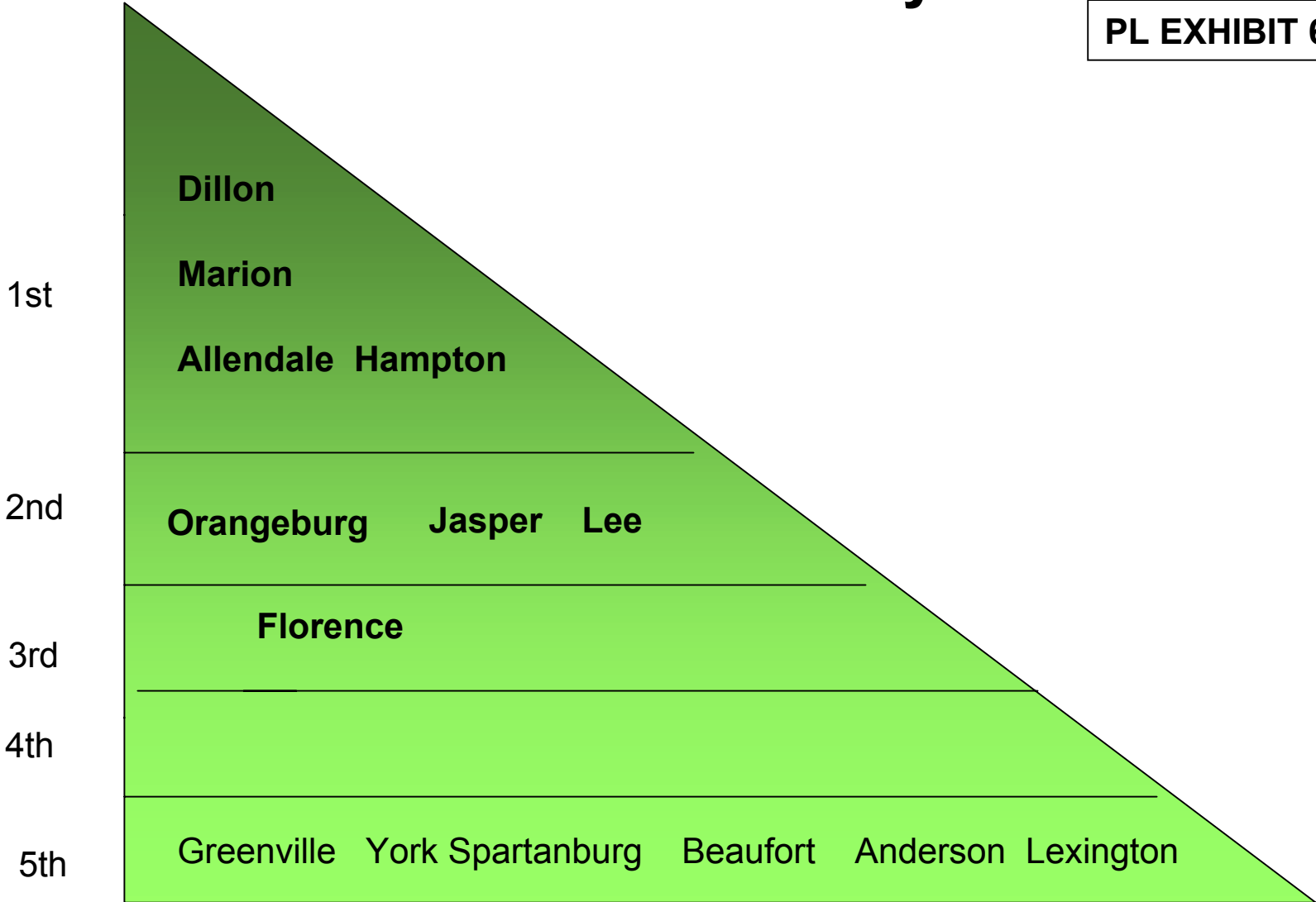
Counties	%	% Above SC Average	% Above US Average
Allendale	48.1	29.1	31.1
Dillon	33.3	14.3	16.3
Florence	22.7	3.7	5.7
Hampton	28.1	9.1	11.1
Jasper	26.5	7.5	9.5
Lee	25.8	6.8	8.8
Marion	33.6	14.6	16.6
Orangeburg	27.6	8.6	10.6

Kids Count: Percentage of Children in Poverty in Plaintiff Counties



Distribution of Plaintiff Counties Among Quintiles by Weighted Rates of Children in Poverty

PL EXHIBIT 6230N



Concentration of Demographic Factors by Kids Count Quintiles

